

Historic, Archive Document

Do not assume content reflects current scientific knowledge, policies, or practices.

1935 SEED ANNUAL
U. S. DEPARTMENT OF AGRICULTURE

MAYO'S SEEDS

Since 1878

Seed Annual for 1935



D. R. MAYO SEED CO., Inc.

419 Wall Avenue

KNOXVILLE -- TENNESSEE

MAYO'S SEED ANNUAL FOR 1935

In this catalog we have tried to list the seeds that you will need. We offer you the same quality seeds that we have sold for more than 50 years.

PRICES. Prices listed in this catalog are postpaid up to 2 pounds and in larger quantities where so stated. These prices, with postage included, are necessarily somewhat higher than our "Over the counter" prices. We are able to name much lower prices in larger lots or in small lots where we do not pay the postage. These prices may change from time to time.

All orders are accepted subject to price changes and stocks being available to fill the orders.

C. O. D. SHIPMENTS. Shipping C. O. D. only adds to the cost, as the buyer pays the expense of the collection. If you prefer shipment made this way, remit with your order one-half of the cost of the items ordered.

THE POST OFFICE DEPARTMENT NOW CHARGES US A FEE FOR THE COLLECTION OF MONEY ORDERS. This fee amounts to about the same as the cost of the money order. We will absorb this charge in any order amounting to \$1.00 or more but if you remit by money order and it is less than \$1.00 please add 6c to it for collecting charges. Use your checking account or send postage stamps in small order.

We wish to thank our many friends for the business with which they have favored us. We hope you will continue to favor us and we offer **QUALITY SEEDS—PROMPT SHIPMENT—FAIR PRICES.**

We give no warranty, express or implied, as to description, quality, productiveness, or any other matter of any seeds, bulbs or plants we sell, and we will not be in any way responsible for the crop.

Yours very truly, D. R. MAYO SEED CO., Inc.

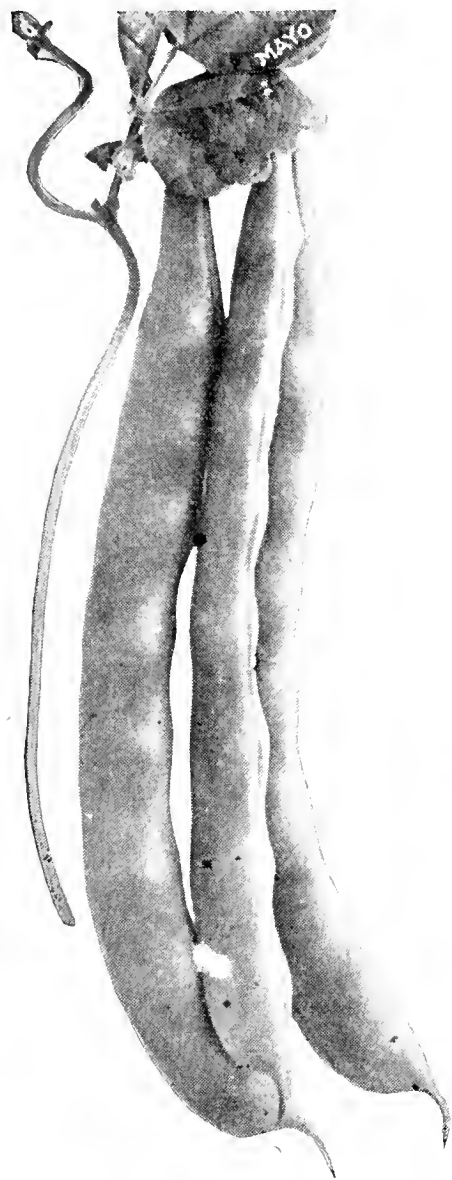
INDEX OF VEGETABLE AND FIELD SEEDS

Including Miscellaneous items and supplies for home and garden.

	Page		Page		Page
Alfalfa	31	Cress	12	Paints	32
Anise	9	Cucumbers	9	Parsnips	11
Artichokes	5	Dandelion	9	Parsley	12
Asparagus	5	Dill	9	Peas, Cow	31
Balm	9	Eggplant	11	Peas, Garden	14
Basil, Sweet	9	Endive	8	Peat Moss	30
Beans, Bunch	3	Feeds	32	Pennyroyal	9
Beans, Pole and Bunch Wax	3	Fertilizer	30	Peppers	15
Beans, Dwarf for Shelling	3	Fungicides	30	Pe Tsai, (Cabbage)	7
Beans, Pole and Bush Lima	5	Grasses, (Lawn)	31	Potatoes, Irish	19
Beans, Pole	4	Grass, (Sudan)	32	Potatoes, Sweet (Plants)	19
Beets	6	Herbs, All kinds	9	Potatoes, Sweet	19
Beekeepers Supplies	29	Horehound	9	Pumpkins	15
Borage	9	Inoculation	29	Radish	16
Borecole	11	Insecticides	30	Rhubarb, (Pie Plant)	16
Broccoli	6	Kale	11	Rosemary	9
Brussel Sprouts	5	Kohl, Rabi	11	Sage	9
Cabbage, (Plants)	18	Lavender	9	Salsify, (Oyster Plant)	16
Cabbage	7	Lespedeza	31	Spinach	17
Caraway	9	Lettuce	12	Squash	17
Carrots	8	Marjoram, Sweet	9	Summer Savory	9
Cashaw Pumpkin	15	Millet	31	Supplies for Canary Birds	32
Catnip or Catmint	9	Muskmelon	13	Swiss Chard	6
Cauliflower	5	Mustard	11	Tobacco Seed	19
Celery	8	Miscellaneous Field Seeds	32	Tomato	18
Chard, Swiss	6	New Items	17	Turnips	19
Collards	12	Okra	11	Watermelons	20
Coriander	9	Onions	12	Wong Bok, (Cabbage)	7
Corn	10	Onion, (Sets)	12	Wormwood	9

INDEX OF FLOWER SEEDS, PLANTS, BULBS AND TREES

	Page		Page		Page
African Daisy	22	Dianthus	22	Nasturtium	23
Ageratum	21	Digitalis	22	Nigella	24
Alyssum	21	Dusty Miller	22	Pansy	24
Antirrhinum	21	Euphorbia	22	Peach, Tree	28
Asters	21	(Mexican Firebush)		Petunia	24
Baby's Breath (Gypsophila)	22	Forget-Me-Not	27	Phlox	24
Bachelor's Button	22	Four O'Clock	27	Pinks	22
Balsam	21	Fox Glove	22	Plums, Trees	28
Calliopsis	21	Gaillardia (Dazzler)	22	Poppy	24
Calendula	21	Geum	22	Roses	28
Candytuft	21	Gladiolus	23	(Garden Flower Shears)	28
Cannas	26	Gypsophila	22	Salvia	23
Cantebury Bell	21	Hunnemania (Yellow Poppy)	24	Scabiosa (Morning Bright)	23
Cardinal Climber	21	Howard Star (Petunia)	24	Scarlet Sage	23
Carnations	21	Heliotrope	27	Shade, Trees	28
Centauria	21	Hollyhocks	27	Snap Dragon (Antirrhinum)	21
Celosia (Cocks Comb)	21	Hvacinth (Jack Bean)	27	Snow on the Mountain	22
Cherry, Trees	28	Kuduz Vine	27	Stocks	23
Columbine	22	Kochia (Mexican Fire Bush)	27	Sunflower	23
Corn flower	21	Lady Slipper (Balsam)	21	Sweet Peas	22
Cosmos	21	Larkspur	22	Sweet Williams	23
Cobaea Scandens	22	Lantana	27	Sweet Sultan	22
Cypress Vine	21	Linum	24	Thunbergia	23
Dahlias	27	Lupin	24	Touch-Me-Not (Balsam)	21
Daisy, African	22	Marigold	24	Verbena	23
Daisy, Shasta	22	Mignonette	24	Wallflower	23
Dazzler (Gaillardia)	22	Morning Glory	24	Zinnias	25
Delphinium	22	Moonflower	23		



Mayo's Brown Bunch Bean

BUNCH BEANS

Mayo's Brown Bunch Beans This bean was introduced by us many years ago and it is yet the best early bean on the Knoxville market. It is unlike most early snap beans in that the quality remains good throughout the bearing season. This bean may be planted early as it will stand more frost than most beans. Year in and year out it is the earliest bean on the Knoxville market. The vines are prolific with dark green crumpled leaves. The pods are long and flat. The large, flat, meaty pods have a splendid flavor. The seeds are light brown in color, and somewhat flat. Truly, this is a wonderful bean for the South. Packet, 10c; ½ Lb. 20c; Lb. 30c; 2 Lbs. 50c; 5 Lbs. \$1.00, Postpaid.

Giant Stringless Green Pod 54 days. For market gardening, shipping and canning. Plant large, sturdy, prolific. Pods medium green, round, meaty, stringless and brittle, with marked indentations between seeds. Pods 6 to 6½ in. long, 7/16 in. wide. Seeds yellowish brown. Packet, 10c; ½ Lb. 20c; Lb. 30c; 2 Lbs. 50c; 5 Lbs. \$1.00, Postpaid.

Burpee Stringless Green Pod An early, sturdy, productive variety. Pods 5 to 6 in. long. Plant large, erect, very productive. Pods round, medium green, very meaty, perfectly stringless, fiberless and of excellent quality. Packet, 10c; ½ Lb. 20c; Lb. 30c; 2 Lbs. 50c; 5 Lbs. \$1.00, Postpaid.

Dwarf Horticultural Large green pods, splashed with carmine. Excellent either as snaps in the green state, shelled green or dry. They become fit for use as green shelled beans very early, and in this condition the beans are very large, easily shelled and about equal to the lima in quality. Packet, 10c; Lb. 35c; 2 Lbs. 65c; 5 Lbs. \$1.25, Postpaid.

Tendergreen New Stringless 53 days. 1933 All-America Gold Medal Winner. Splendid for home, market and canning. Plant medium large, erect, rather thick stemmed and very heavily productive. Pods nearly straight, dark green, round, meaty and succulent; absolutely stringless, totally without fiber, of outstanding quality. Pods 6 to 6½ in. long, ⅜ in. thick. Seeds brownish buff with purple mottling. About the finest new home garden bean introduced in many years. Packet, 10c; ½ Lb. 20c; Lb. 35c; 2 Lbs. 60c; 5 Lbs. \$1.10, Postpaid.

Extra Early Red Valentine 52 days. The old dependable bush bean of the South for home gardens, market and shipping. Plant medium, hardy, erect, heavily productive. Pods meaty, round, creased-backed, brittle, curved, stringy, of good quality. Pods 4½ to 5 in. long, ⅜ in. wide. Seed purplish red, splashed buff yellow. Packet, 10c; ½ Lb. 20c; Lb. 30c; 2 Lbs. 50c; 5 Lbs. \$1.00, Postpaid.

Refugee or 1,000 To 1 Pods nearly round, light green and about five inches long, tapering to slender point. Brittle, but has slight string. Later than other early bunch beans, but is very prolific. Very popular with canners. Packet 10c; ½ Lb. 20c; Lb. 30c; 2 Lbs. 50c; 5 Lbs. \$1.00, Postpaid.

Bountiful An important variety for market gardeners and shippers; likewise for home gardens. Plant medium large, prolific, thrifty. Pods flat, light green, stringless, slightly fibrous and of good quality. Pods about 5 in. long. Packet, 10c; ½ Lb. 20c; Lb. 30c; 2 Lbs. 50c; 5 Lbs. \$1.00, Postpaid.

Pole and Bunch Wax Beans

PRICES POSTPAID

	Pkt.	½ Lb.	Lb.	2 Lbs.	5 Lbs.
Pencil Pod Black Wax (Bunch)	10c	20c	30c	55c	\$1.00
Rust Proof Golden Wax (Bunch)	10c	20c	30c	55c	1.00
White Wax (Bunch)	10c	20c	30c	55c	1.00
Golden Wax (Pole)	10c	20c	30c	55c	1.00

Dwarf Beans for Shelling

PRICES POSTPAID

Red Kidney	10c	20c	30c	55c	\$1.00
White Kidney	10c	20c	30c	55c	1.00
Yellow Eye	10c	20c	30c	55c	1.00
White Navy	10c	20c	30c	55c	1.00

POLE BEANS

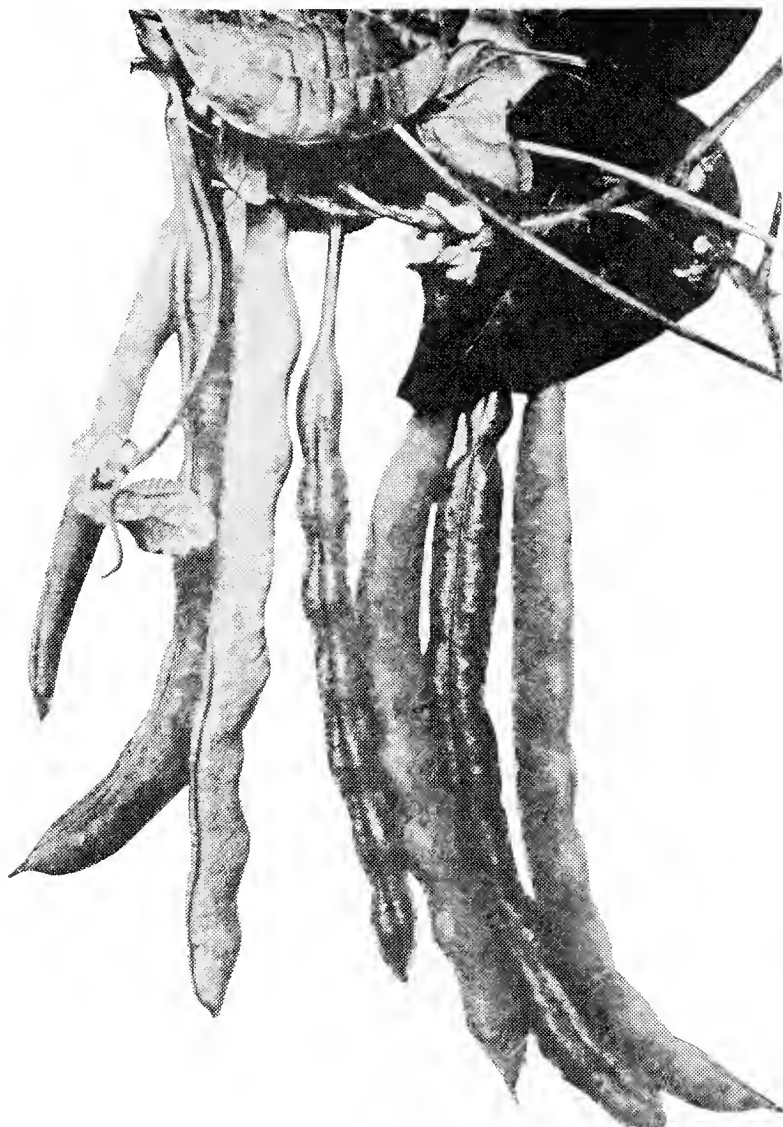
Beans produce the most crop for the least money and labor of anything in the garden. With a minimum of care Mayo's Pole Beans will produce a wonderful crop.

Kentucky Wonder—or **Old Homestead** The best known and most popular pole bean. Good for home, market garden and for canning. Strong climber, hardy, very prolific over long season. Pods practically round, curved, meaty, of good quality; slightly stringy, fiberless, very brittle. **Packet, 10c; ½ Lb. 20c; Lb. 30c; 2 Lbs. 55c; 5 Lbs. \$1.10, Postpaid.**

Kentucky Wonder Wax The most popular wax podded pole variety. Plants vigorous, good climber, productive. Pods waxy yellow, flat, nearly stringless, somewhat fibrous, meaty. **Packet, 10c; ½ Lb. 20c; Lb. 35c; 2 Lbs. 60c; 5 Lbs. \$1.10, Postpaid.**

Tennessee Wonder The pods of this bean are considered the largest, straightest and most handsome of all cultivated beans. Good climber, pods about 6 inches long, light green, deeply creasebacked. **Packet 10c; ½ Lb. 20c; Lb. 35c; 2 Lbs. 60c; 5 Lbs. \$1.10, Postpaid.**

McCaslin An excellent white bean for home and market garden use. It is good as a dry shell bean as well as for snap bean. Pods thick-flat, dark green, meaty, stringless, tender and of good quality. Very popular on the Knoxville market. **Packet, 10c; ½ Lb. 20c; Lb. 35c; 2 Lbs. 60c; 5 Lbs. \$1.10, Postpaid.**



Kentucky Wonder Bean

Larger Quantities Lower Prices For prices on larger quantities of beans than listed in the back of this book. We believe these prices are as low as can be quoted on the quality of seeds that Mayo's sells. These prices may change at any time—write us for new prices at any time.

Pole Horticultural—London Horticultural Vines moderately vigorous, with large, light colored leaves. Pods are short, broad and pale green, streaked with red as they mature. The seeds are flesh colored, splashed and spotted with red. It can be used either as snap or shelled bean. Some people use this variety as a winter bean. **Packet, 10c; ½ Lb. 20c; Lb. 35c; 2 Lbs. 60c; 5 Lbs. \$1.10, Postpaid.**

Lazy Wife Sometimes known as the White October. Derives its name from the fact that the pods are entirely stringless, thus saving the wife the trouble of stringing preparatory to use. The pods are of medium dark green color, and are produced in great abundance, measuring from four and one-half to six inches in length. Each pod contains from six to eight beans, which are excellent for winter shell beans. **Packet, 10c; ½ Lb. 20c; Lb. 35c; 2 Lbs. 60c; 5 Lbs. \$1.10, Postpaid.**

	Pkt.	½ Lb.	Lb.	2 Lbs.	5 Lbs.
Red Speckled Cutshort	10c	20c	35c	60c	\$1.10
White Creaseback	10c	20c	35c	60c	\$1.10
Striped Creaseback	10c	20c	35c	60c	\$1.10

Mayo's Best Bean Collection 4 Packets 30c Postpaid. Many of our customers like a good assortment of a packet each of several good beans for use in small gardens. We offer a packet each of the following varieties. Tennessee Green Pod, Kentucky Wonder, Giant Stringless Green Pod and Henderson Bush Lima. The 4 full sized packets 30c. 1 Lb. each of these beans for 95c, Postpaid.

POLE AND BUSH LIMA BEANS

Burpee Bush Lima Plant medium large, vigorous, highly productive. Pods slender, containing 4 to 5 beans which are dingy white, large, broad, flat, of excellent quality. Packet, 10c; ½ Lb. 20c; Lb. 35c; 2 Lbs. 60c; 5 Lbs. \$1.10, Postpaid.

Small White Lima Small white seeded "Carolina" or "sieva" bean known everywhere in the South. Sure, early bearer with 3-inch curved pods. Prolific and vigorous grower. Most largely grown pole butter bean in the South. Packet, 10c; ½ Lb. 20c; Lb. 30c; 2 Lbs. 50c; 5 Lbs. \$1.00, Postpaid.

Large White Lima Sometimes called "King of the Garden Lima." True large lima pole bean. Better for late than early plantings. Pods about 5½ inches long, very broad and borne in clusters. Pods contain 4 large white beans. Packet, 10c; ½ Lb. 20c; Lb. 35c; 2 Lbs. 60c; 5 Lbs. \$1.10, Postpaid.

Henderson Bush Lima Most popular of the Bush limas. Bush form of the Small White Lima. Early, immensely prolific bearer, good in either green or dry stage. Sets pods from earliest bloom. Packet, 10c; ½ Lb. 20c; Lb. 30c; 2 Lbs. 50c; 5 Lbs. \$1.00, Postpaid.

Jackson Wonder Bush Lima Most prolific and nearest drought proof of all limas. Of Georgia origin. Flavor rich and delicious. Seeds same size as Small Pole Lima but are of brownish color. A safe bean to plant for home use. It's a sure-cropper, almost regardless of season. Packet, 10c; ½ Lb. 20c; Lb. 30c; 2 Lbs. 50c; 5 Lbs. \$1.00, Postpaid.

Fordhook Bush Lima Finest of large thick seeded limas but better for late than early plantings. Stiff upright growth. Pods 5 inches long containing 4 to 5 large delicious beans. In a class by itself, no other like it. Bears in clusters 4 to 8 pods. Packet, 10c; ½ Lb., 20c; Lb. 35c; 2 Lbs. 60c; 5 Lbs. \$1.15, Postpaid.

Mayo's Lima Bean Collection. 25c For those who want a good selection of Lima Beans we offer the three following kinds of Bush Lima Beans for only 25c. Henderson's Bush Lima, Burpee Bush Lima and Jackson Wonder. These are ALL Bush Beans, no trouble with poles. ½ Pound each of the above beans for only 50c Postpaid.

ARTICHOKES

Jerusalem Fine for table use and hog feed. Grown like irish potatoes, Jerusalem Artichokes produce immense yields of nourishing tubers on fairly rich soil. For seed purposes, the tubers may be cut according to their eyes just as irish potatoes. Two or three pounds will plant a 50 foot row. Pound 25c, 5 pounds \$1.00 Postpaid. Write for prices in larger quantities.

ASPARAGUS

Mary Washington Asparagus Seed The latest development of rust resistant asparagus, larger than the original Washington, with very tight tips of fine quality. Packet, 8c; Oz. 15c; ¼ Lb. 40c, Postpaid.

Martha Washington Asparagus Seed The original rust resistant variety; heavy yielding, with large dark green stalks; of fine quality. Packet 8c; Oz. 15c; ¼ Lb. 35c, Postpaid.

Asparagus Roots 2 Years Old. Either Mary or Martha Washington. 25 Roots for 35c; 50 roots for 60c, 100 roots for 95c, Postpaid. Write for prices on larger quantities and older roots.

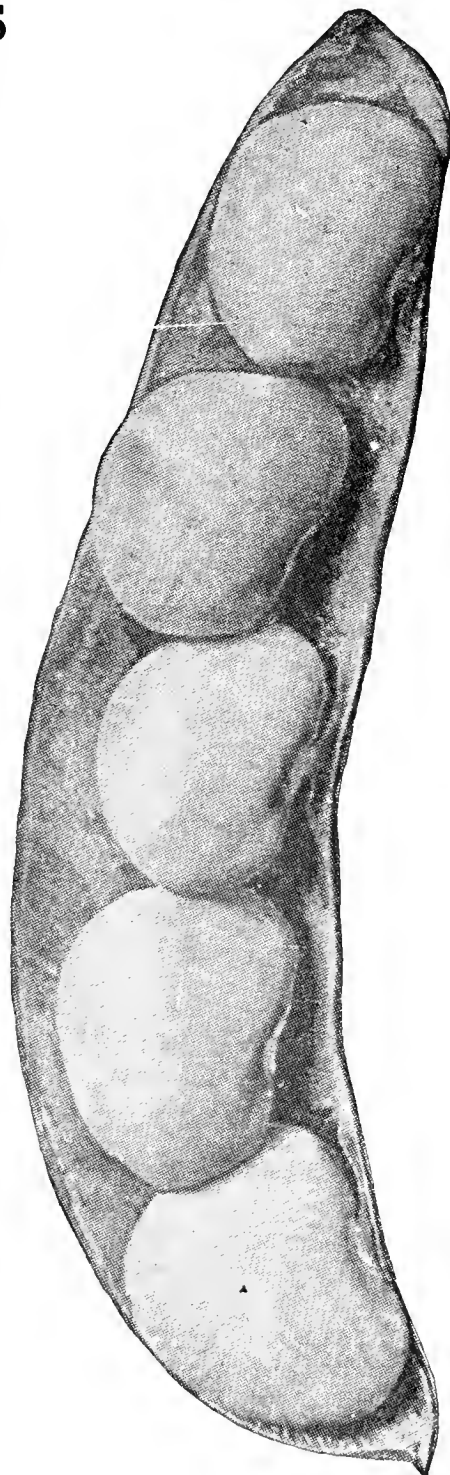
BRUSSELS SPROUTS

Cultivate the same as cabbage.

Improved Dwarf The most desirable variety for the South. 18 to 30 inches high producing compact sprouts of finest quality. Packet 10c; Oz. 20c; ¼ Lb. 60c; Lb. \$2.00.

CAULIFLOWER

Early Snowball One of the most popular sorts for growing outside. Heads good size and compact. Pure White. A dependable header. Packet, 10c; ¼ Oz. 50c; Oz. \$1.50; ¼ Lb. \$5.00, Postpaid.

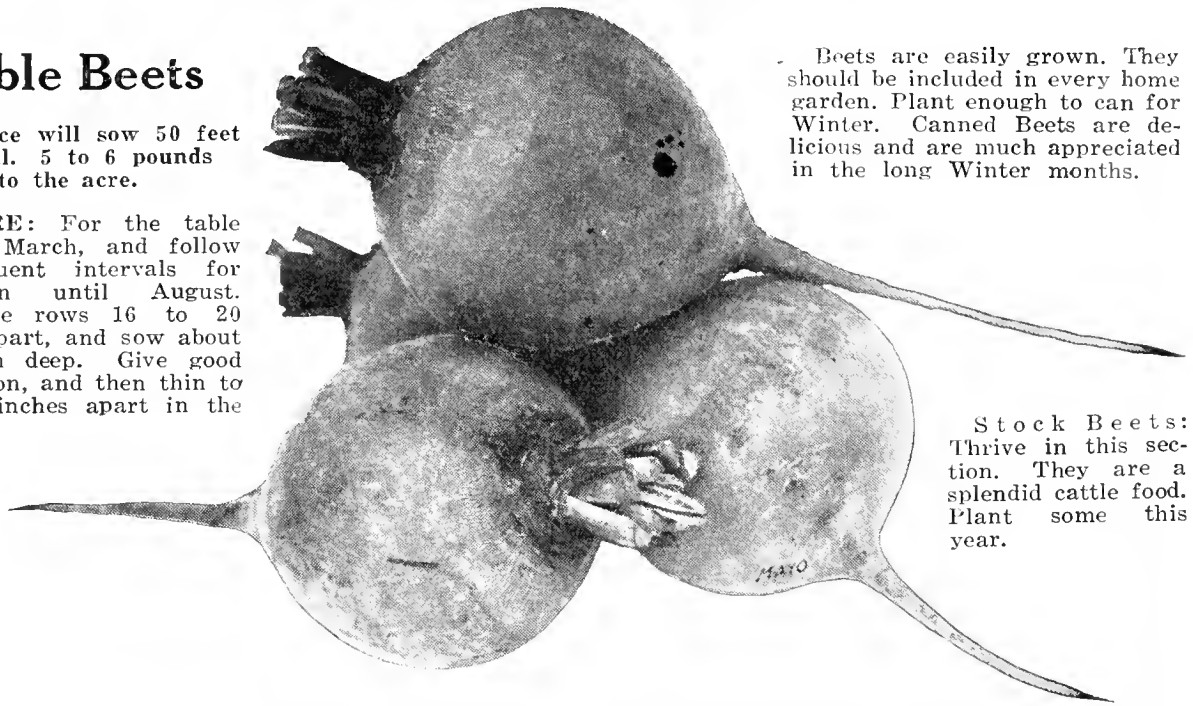


Burpee Bush Lima

Table Beets

One ounce will sow 50 feet of drill. 5 to 6 pounds to the acre.

CULTURE: For the table sow in March, and follow at frequent intervals for succession until August. Have the rows 16 to 20 inches apart, and sow about one inch deep. Give good cultivation, and then thin to 3 to 4 inches apart in the rows.



Beets are easily grown. They should be included in every home garden. Plant enough to can for Winter. Canned Beets are delicious and are much appreciated in the long Winter months.

Stock Beets: Thrive in this section. They are a splendid cattle food. Plant some this year.

Early Wonder Very early dark red beet. Its earliness and rich color make it a favorite both with truckers and home gardeners. The tap root is very small and the beet itself is of very desirable shape for bunching. Early Wonder is one of the most desirable beets for home and market use. Matures in about 55 Days. Packet, 10c; Oz. 15c; ¼ Lb. 30c; Lb. \$1.00, Postpaid.

Early Blood Turnip A good standard variety for home use. Root ovoid with smooth dark skin. Flesh deep red. Tender and sweet. Packet, 5c. Oz. 10c; ¼ Lb. 25c; Lb. 85c, Postpaid.

Crosby Early Egyptian An extra early variety for home and market garden use. Roots flattened globe in shape, with small tap root; dark red. Tops medium. Flesh purplish red. Tender, sweet and fine quality. Matures in about 55 days. Packet, 5c; Oz. 10c; ¼ Lb. 25c; Lb. 90c, Postpaid.

Detroit Dark Red The outstanding variety for truckers, produce shippers and canners. Tops medium, dark green tinged with red. Roots globular, smooth, uniform, attractive, with small tap root. Color deep ox-blood red. Flesh dark red with indistinct zones of slightly lighter hue. Fine quality, sweet and tender. Packet, 10c; Oz. 15c; ¼ Lb. 45c; Lb. \$1.10, Postpaid.

Long Smooth Red An old time favorite for late use. Long, smooth blood red roots growing deep into the soil, resisting hot Summer sun and drouth. You should plant some of these for use after the early sorts are gone. Packet, 5c; Oz. 10c; ¼ Lb. 25c; Lb. 85c, Postpaid.

Mangel Beets Immensely valuable for feeding milch cows. Easily grown, very productive and fine to keep up the flow of milk when pastures have dried up.

Jumbo Long Red Mangel Largest and heaviest yielder in the South of all the true Mangel beets. Roots grow from one-half to two-thirds above the surface and are usually 18-24 in. long and 4-6 in. wide. The tonnage on rich or well-fertilized ground is immense. Plant 10 Lbs. per acre in 2½ to 3-foot rows. Oz. 10c; ¼ Lb. 20c; Lb. 50c, Postpaid.

Golden Tankard Root large, flesh yellow, zoned with white. Packet, 5c; Oz. 10c; ¼ Lb. 25c; Lb. 65c. 10 Lbs. \$6.00, Postpaid.

SWISS CHARD OR SPINACH BEET

Cultural Directions Swiss Chard is a beet grown for its leaves. The mid-rib when boiled makes delicious greens, or the leaves may be boiled and served as spinach. Sown in the spring the leaves are soon ready to eat and will continue to grow all through the summer and fall. If given a little protection it will survive the winter and make excellent greens early in the spring. One ounce will sow 60 feet of drill.

Swiss Chard Should be in your garden. Probably no vegetable is coming into popular favor more rapidly than Swiss Chard or Sea Kale. It is grown for its leaves only as it does not make a bulbous edible root like the other varieties. The leaves grow large and upright and as the outer leaves are cut more come from the center. The mid-rib or center stem of each leaf is large and almost white and after trimming can be cooked and served like asparagus. The leaf part can be cooked like spinach or turnip greens, or if desired the whole leaf can be boiled and served as "greens." There is a delicious, delicate flavor not found in either turnips or kale. Packet, 10c; Oz. 15c; ¼ Lb. 30c; Lb. 90c, Postpaid.

Broccoli Give culture as for Cauliflower, and in the South unless an expert Cauliflower grower, Broccoli makes a surer header for you. Italian Green Sprouting. All season variety. A tall branching plant forms a central head of bluish green flower buds resembling a loose head of Cauliflower. After the main head is removed, side branches continue to develop during the season, and frequently form small heads, which, with the stems, are cut and served in the same way as Asparagus. Cultivate same as Cabbage. Packet, 10c; Oz. 25c; ¼ Lb. 75c; Lb. \$2.50, Postpaid.

MAYO'S CABBAGE SEEDS.

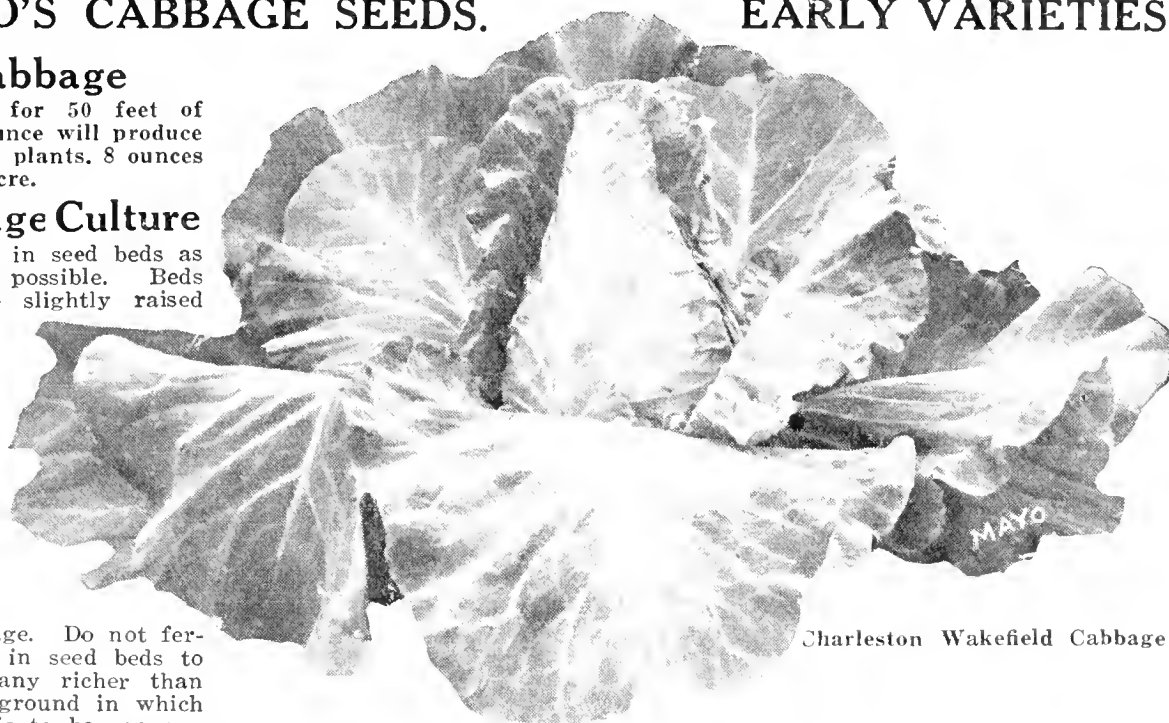
EARLY VARIETIES

Cabbage

1 packet for 50 feet of row. 1 ounce will produce about 2000 plants. 8 ounces for one acre.

Cabbage Culture

Work soil in seed beds as fine as possible. Beds should be slightly raised



Charleston Wakefield Cabbage

for drainage. Do not fertilize soil in seed beds to make it any richer than the open ground in which the crop is to be grown.

Sow seed in drills 6 inches apart across the bed, dropping the seed 5 or 6 to the inch. Thicker sowings mean spindling, unhealthy plants. Cover seed about 1/4 inch in heavy soils, 1/2 inch in light sandy soils; firm the soil after covering and then water the bed thoroughly. Keep beds moist but not soaking wet. Seed germinates in 3 to 8 days, according to weather. Keep young plants growing steadily from the start. When plants have made the fourth or fifth pair of leaves transplant to open ground.

Early Jersey Wakefield The best early variety, very hardy. Heads are cone shaped, very solid, and of excellent quality. Leaves are thick and stout. Used by market gardeners and shippers. Packet, 10c; Oz. 20c; 1/4 Lb. 50c; Lb. \$1.50, Postpaid.

Charleston Wakefield Used in the South for Winter shipping to Northern markets and excellent for home gardens and truckers. About a week later than Early Jersey Wakefield, with heart shaped heads. Packet 10c; Oz. 20c; 1/4 Lb. 50c; Lb. \$1.50, Postpaid.

	Packet	Oz.	1/4 Lb.	1 Lb.
EARLY SPRING	10c	20c	50c	\$1.50
Early Dwarf Flat Dutch	10c	20c	50c	1.50
Early Winninstadt	10c	20c	50c	1.50
Copenhagen Market	10c	20c	60c	1.75

Golden Acre An extra early Copenhagen type with small, round, solid heads, maturing with Jersey Wakefield. Plants dwarf, with few outer leaves. Packet 10c; Oz. 25c; 1/4 Lb. 80c; Lb. \$2.80, Postpaid.

CABBAGE. INTERMEDIATE VARIETIES

All Head Early A medium early variety, excellent for shipping and for kraut. Heads flat, slightly rounded at top, 7 inches deep, solid, uniform in size and color. Packet 10c; Oz. 20c; 1/4 Lb. 50c; Lb. \$1.50, Postpaid.

	Packet	Oz.	1/4 Lb.	1 Lb.
All Seasons	10c	20c	50c	\$1.50
Early Summer	10c	20c	50c	1.50
Savoy, Early Curled	10c	20c	50c	1.50
Succession	10c	20c	50c	1.50

CABBAGE. Late or Winter Varieties

Danish Ball Head or Hollander Most widely used and the best of late cabbages, desirable for shipping, and kraut. Plants medium, with short stems. Heads very attractive, deep round, extremely solid. Packet 10c; Oz. 20c; 1/4 Lb. 60c; Lb. \$1.75, Postpaid.

	Packet	Oz.	1/4 Lb.	1 Lb.
Large Late Drumhead	10c	20c	60c	\$1.75
Premium Late Flat Dutch	10c	20c	60c	1.75
Savoy, Perfection Drumhead	10c	20c	60c	1.75
Surehead	10c	20c	50c	1.50

CHINESE CABBAGE

Pe Tsai Early and sure heading. Outer dark green leaves enclose cylindrical, tapering head; very compact, white, tinted with green; crisp and sweet. Packet, 10c; Oz. 20c; 1/4 Lb. 60c; Lb. \$1.75, Postpaid.

Wong Bok Heads shorter and thicker than Pe Tsai; compact, tender, and well blanched. Packet, 10c; Oz. 20c; 1/4 Lb. 60c; Lb. \$1.75. For Cabbage Plants See Page 18

CARROTS

Ounce will sow 100 feet of drill. 4 to 6 pounds to the acre.

CULTURE: Loose, warm soil in good mechanical condition. Well fertilized with manure or commercial fertilizers high in potash. Sow in March and April in rows one-half foot apart. Keep the ground free from weeds. In raising for stock make the rows wider apart in order to give room for horse cultivation.

Imperator A recent introduction. An outstanding type bred for market garden use, and for shipping. Tops medium, but strong enough for good bunching. Roots have sloping shoulders, smooth, deep rich orange, uniformly tapered to a semi-blunt end. Flesh rich orange color, extending to center of root, with indistinct core; fine grained, tender and of fine quality, 7 to 8 inches long. Packet, 10c; Oz. 15c; ¼ Lb. 35c; Lb. \$1.00, Postpaid.

Oxheart or Guerande This fine variety is the best of the shortened, thick-formed carrots. Roots are 3 in. wide at top and taper to a 2 in. diameter at bottom. Length from 4 to 5 inches. Roots are very free from hard core and of the finest quality for table use. Both skin and flesh are highly colored. Being very short they are easily pulled from the ground, where the long sorts have to be dug. Packet, 5c; Oz. 10c; ¼ Lb. 25c; Lb. 80c.

Danvers Half Long Bright deep orange color, very smooth and finely formed. Produces more weight to the acre than any other half-long variety and adapted to all types of soil. Mature roots are 6 to 7 inches long, tender and of good quality. Packet 10c; Oz. 15c; ¼ Lb. 30c; Lb. 90c.

Improved Long Orange Old, well-known variety. Roots often 12 in. long and of a deep rich orange color. A very heavy cropper, so heavy, in fact, that it is profitable to grow for stock feed, while in quality it is a good table carrot. Packet, 5c; Oz. 10c; ¼ Lb. 25c; Lb. 80c, Postpaid.

Morse's Bunching NEW. 1934 Gold Medal Winner. Striking New Carrot especially developed for shipping, with its ideal tops for tying and symmetrical roots, but it is equally desirable as a home garden variety. It is a cylindrical, half-long Carrot, of ideal size and shape for bunching. Color is a fine deep orange throughout, cores small and indistinct. Tops are short, rather bushy and strong but not coarse at the neck. Quality fine, flesh tender and sweet. Roots 7 to 8 in. long, slightly tapering with sloping shoulders. In fact this is almost identical with Imperator together with a heavier, more bushy top. It has the quality of short-rooted varieties but with the desirable length to compete in the market with California Danvers grown under irrigation. Packet, 10c; Oz. 15c; ¼ Lb. 40c; Lb. \$1.25, Postpaid.

Chantenay, or Model One of the most popular carrots. Half long, stump rooted, smooth and good color. Medium-size top and medium early. Grown principally for bunching, but can also be used for a bushel carrot. Packet, 5c; Oz. 15c; ¼ Lb. 35c; Lb. 90c, Postpaid.

CELERY

1 Ounce of Seed will Produce 5,000 Plants

CULTURE: For early summer, sow seeds of self-blanching varieties in flats under glass during February. Later stick out into other flats in the open. In April and May set the plants out in a very rich and well prepared land in rows 3 to 4 feet apart and 6 inches apart in the rows. Give good cultivation. For late and winter celery, sow the seed of standard varieties either in flats or directly in the open ground. If sowing in the open, make the rows for plants one foot apart and sow the seed shallow. Then transplant into rows four feet apart. Blanch by gradually banking the soil to within a few inches of the top of the leaves.

Golden Yellow Self-Blanching This is the best celery for early use. Plants yellowish green in color, but as they mature the inner stems and leaves turn golden yellow. Therefore, the blanching does not take much time or extra labor as in the other varieties of celery. It is, when matured, of fine color, very tender, and of fine flavor. Packet, 10c; ½ Oz. 30c; Oz. 50c; ¼ Lb. \$1.50; Lb. \$5.00, Postpaid.

White Plume—Giant Pascal Old, well-known varieties, preferred by many planters. Each: Packet, 5c; Oz. 25c; ¼ Lb. 75c; Lb. \$2.50.

ENDIVE

One of the best salads for fall and winter use. Endive is not only much used for salads and garnishing, but is also desirable for greens.

Early Green Curled Most largely planted variety. Has hardy deep green leaves finely divided. Centers easily blanched and present a most beautiful appearance when mature. Packet, 10c; Oz. 15c; ¼ Lb. 40c; Lb. \$1.25, Postpaid.



Golden Yellow Self-Blanching Celery

CUCUMBERS

One Ounce will Plant 50 Hills. 2 Lbs. will Plant 1 Acre

CULTURE: Cucumbers are very tender. Delay planting until ground is warm. Otherwise seed is apt to rot. Make hills 4 feet apart each way. Use about one-quarter pound good commercial fertilizer to the hill. Mix thoroughly with soil before planting. Plant 8 to 10 seeds per hill, thinning out to 4 plants when rough leaves appear. Cover seed 1 inch in sandy soil, $\frac{1}{2}$ inch in heavy or clay soils. Cultivate until plants begin to run.

Green Prolific Fruits 4 to 5 inches long. Very prolific. Fine for pickles. Packet, 10c; Oz. 20c; $\frac{1}{4}$ Lb. 60c; Lb. \$1.75, Postpaid.

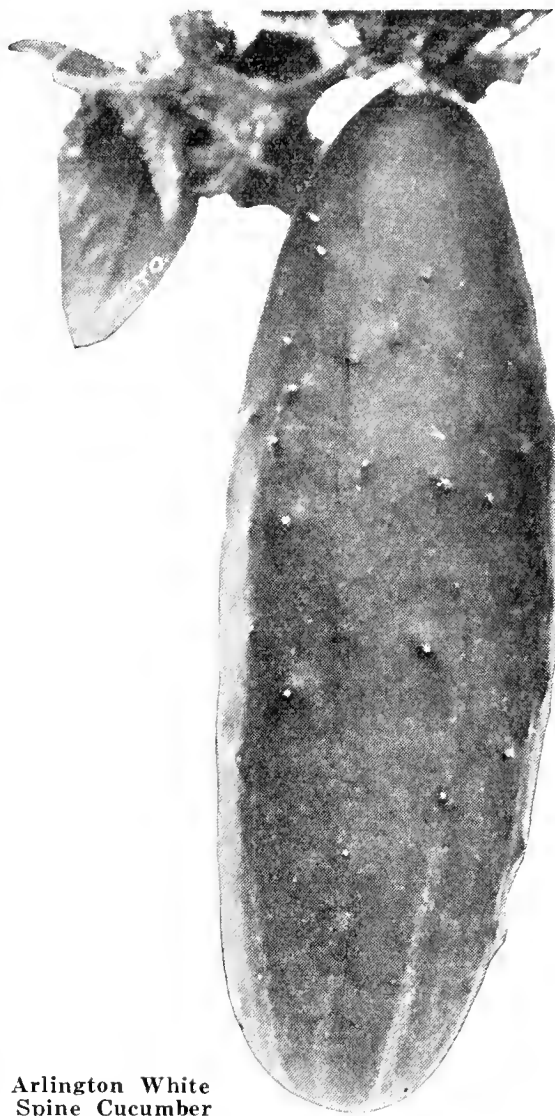
Arlington White Spine One of the most popular White Spine sorts. The fruit is very uniform, averaging seven to eight inches. It is extra early and very prolific. Packet, 10c; Oz. 20c; $\frac{1}{4}$ Lb. 75c; Lb. \$2.00, Postpaid.

Early Fortune White Spine. Of dark green color which it holds for many days after picking. Of very regular form and growth, tapering shape and carries a dark green color found in few of the White Spine varieties. Holds up splendidly in long distance shipments. Also good for nearby market use. Packet, 10c; Oz. 20c; $\frac{1}{4}$ Lb. 60c; Lb. \$1.75, Postpaid.

Improved Long Green Vines vigorous and productive, forming fruit for table use nearly as early as the short sorts. Fruit about 12 inches long, firm and crisp. Fine for pickles and table use. The mature fruits are sometimes used for making sweet pickles. Packet, 10c; Oz. 25c; $\frac{1}{4}$ Lb. 85c; Lb. \$2.50, Postpaid.

Early Cluster Black Spine. A standard well-known variety for both slicing and pickling. Very prolific, uniform size, smooth skin. Packet, 10c; Oz. 20c; $\frac{1}{4}$ Lb. 60c; Lb. \$1.75, Postpaid.

Clark's Special A very special stock suited for the nearby market, or for long distance shipping. Fruits 9 to 11 inches long, slightly tapered at ends, with dark green skin. Packet, 10c; Oz. 25c; $\frac{1}{4}$ Lb. 75c; Lb. \$2.50, Postpaid.



Arlington White Spine Cucumber

AROMATIC, MEDICINAL AND POT HERBS

ANISE. Aromatic seeds used as a condiment. Leaves finely fringed, used in garnishing and flavoring, in cordials for colic and nausea. Annual, 15 in. tall. Packet, 10c; Oz. 15c, Postpaid.

BALM. Leaves fragrant like Lemon Verbena. Adds fine flavor to summer drinks. Useful for tea in fevers. Perennial herb, 10-12 in. tall. Packet, 10c; Oz. 50c, Postpaid.

BASIL, SWEET. Seeds and stems have strong flavor; used in soups and sauces. Hardy annual, 2 ft. Packet, 10c; Oz. 25c, Postpaid.

BORAGE. Bee food and honey plant; leaves used for flavoring cordials. Grows freely and the sky blue flowers are beautiful. Annual, 24-30 in. tall. Packet, 10c; Oz. 20c, Postpaid.

CARAWAY. Produces aromatic seeds the second year to flavor bread, cakes, etc. Leaves flavor soups and liquors. Biennial, 20 in. tall. Packet, 10c; Oz. 20c; $\frac{1}{4}$ Lb. 50c; Lb. \$1.50, Postpaid.

CATNIP OR CATMINT. Leaves used both dry and green for seasoning. Perennial, 24-30 in. Packet, 10c; 3 Packets, 25c, Postpaid.

CORIANDER. 50 days. Agreeable tasting seeds used in confectionery and to disguise taste of medicines. Hardy annual, 18-24 in. tall. Packet, 10c; Oz. 15c; $\frac{1}{4}$ Lb. 35c; Lb. \$1.00, Postpaid.

DANDELION. Fine quality leaves for salad or greens. Sow in May for greens next spring. Far superior to the common Dandelion. For roots, sow in fall to dig the following fall. Packet, 10c; Oz. 60c; $\frac{1}{4}$ Lb. \$1.75; Lb. \$6.00, Postpaid.

SUMMER SAVORY. Dried leaves, stems and flowers used for flavoring soups and dressings. Hardy aromatic annual, much like Thyme, but milder. 10-12 in. tall. Packet, 10c; Oz. 20c; $\frac{1}{4}$ Lb. 60c; Lb. \$2.00, Postpaid.

DILL. Seeds strongly aromatic with pungent flavor, for flavoring pickles and for seasoning. Chief use is for Dill Pickles. Packet, 5c; Oz. 15c; $\frac{1}{4}$ Lb. 35c; Lb. \$1.00, Postpaid.

HOREHOUND. Leaves used for seasoning; also in candy and cough medicine. Hardy perennial, 2 ft. tall, aromatic odor and bitter taste. Packet, 10c; Oz. 30c; $\frac{1}{4}$ Lb. 90c; Lb. \$3.00, Postpaid.

LAVENDER. Common lavender; leaves used for seasoning. Dried flowers are highly esteemed for perfume. Hardy perennial, 24-30 in., Packet, 10c; Oz. 25c; $\frac{1}{4}$ Lb. 75c; Lb. \$2.50, Postpaid.

MARJORAM, SWEET. Tender shoots and leaves used for seasoning and dried for winter use. Tender perennial, grown as an annual; 12-16 in. Packet, 10c; Oz. 25c, Postpaid.

PENNYROYAL. Low, creeping plant, ornamental for covering ground in damp, shady places. Furnishes the medicinal properties for menthol pencils and headache cures. Packet, 10c, Postpaid.

ROSEMARY. Hardy perennial with fragrant odor and warm bitter taste. Leaves used for flavoring meats and soups and the flowers are principal ingredient in distillation of toilet waters. 20-28 in. tall. Packet, 10c; Oz. 75c, Postpaid.

SAGE. Most popular garden herb; used in flavoring or seasoning; supposed to have medicinal values. Cut leaves as plant blooms; dry quickly in shade. Hardy perennial; may be divided for an even better crop the second year. 12-18 in. tall. Packet, 10c; Oz. 30c; $\frac{1}{4}$ Lb. 90c; Lb. \$3.00, Postpaid.

WORMWOOD. The dried leaves are used as a tonic, vermifuge and dressing for fresh bruises; fine poultry tonic. Fragrant, spicy odor and very bitter taste. Perennial, 3-4 ft. tall. Packet, 10c; Oz. 25c; $\frac{1}{4}$ Lb. 75c; Lb. \$2.50, Postpaid.

CORN

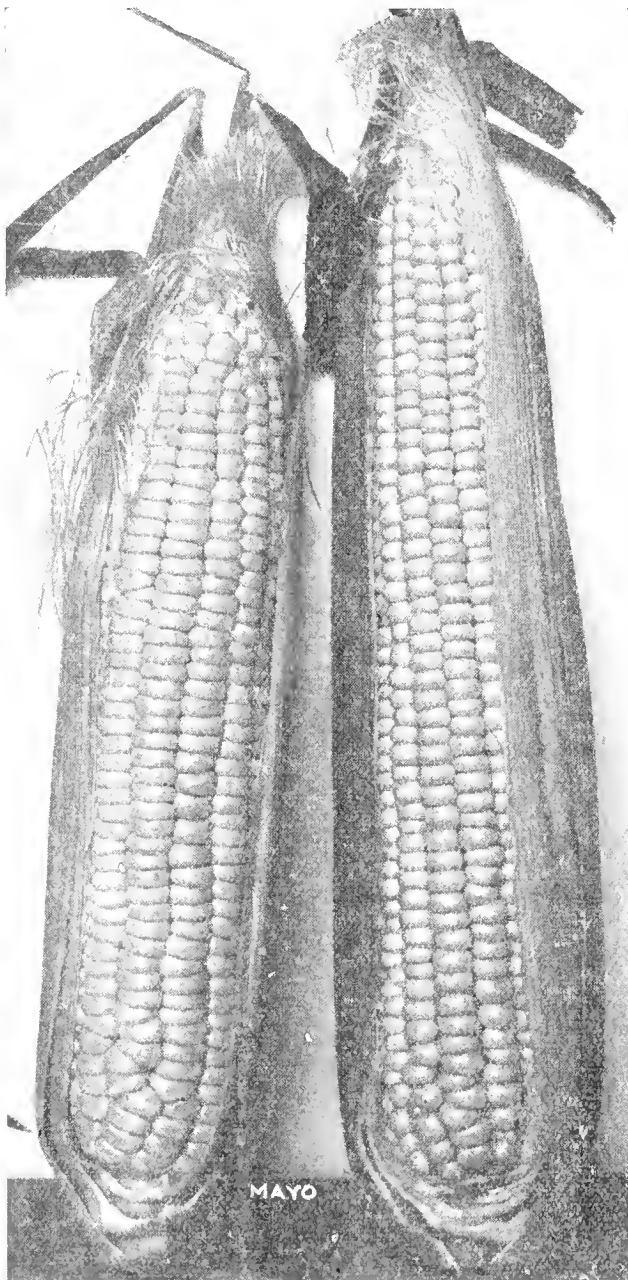
One Pound, 200 Hills.

CULTURE: Plant in April, May and June. For succession plant every two weeks till August.

ROASTINGEAR CORNS

Extra Early Adams The earliest of corn for this section of the country. Not a sweet corn, but it produces small, short ears, well filled with tender white grains. Matures for roastingears in about 70 days. Prices: Postpaid, Packet, 10c; ½ Lb. 20c; 1 Lb. 30c; 2 Lbs. 45c.

Improved Early Adams Very much larger than extra early sorts. Matures for roastingears in about 80 days. Prices: Postpaid, Packet, 10c; ½ Lb. 20c; 1 Lb. 30c; 2 Lbs. 45c; 5 Lbs. 85c.



Mayo's Best Early Roastingear

Mayo's Best Early Roastingear

Only about three days later than Adams Early, but far larger and better corn. The shucks grow so tight to the end of the ear as to exclude the corn worm, which is very disastrous to the early varieties. This will remain tender for roastingears longer than any of the other varieties. We introduced this on the Knoxville market many years ago, and it has not been equaled by any other introductions. Three to five ears to the stalk. Prices, Postpaid, Packet, 10c; ½ Lb. 20c; 1 Lb. 30c; 2 Lbs. 45c; 5 Lbs. 90c.

Country Gentleman Small white cob, thickly covered with irregular rows of long, slender white grains of splendid quality. This is one of the very best varieties of sugar corn. Ears are seven to nine inches long. Matures with the medium varieties of sugar corn. Packet, 10c; Lb. 35c; 2 Lbs. 65c; 5 Lbs. \$1.35, Postpaid.

MAYO'S GOLDEN GIANT

This variety is a cross between the Golden Bantam and the Howling Mob Corn. It is as early as the Golden Bantam, and the ears are much larger. This is a golden sweet corn which grows to a good sized ear. It is a very sweet, and a good yielder. Packet, 10c; Lb. 35c; 2 Lbs. 65c; 5 Lbs. \$1.35, Postpaid.

Bantam Evergreen A combination of Golden Bantam and Stowell's Evergreen, possessing the bright golden color of Golden Bantam and the flavor of Stowell's Evergreen. Packet, 10c; Lb. 35c; 2 Lbs. 65c; 5 Lbs. \$1.35., Postpaid.

Popcorn—Dynamite Great South American variety popping its golden kernels double the size of others. Rich, buttery color and flavor; no hard centers. Usually 2 ears. 6-7 in. long and 12-14 rows, per stalk. Pops to enormous size. Packet, 10c; Lb. 35c; 2 Lbs. 65c; 5 Lbs. \$1.35, Postpaid.

Stowell's Evergreen Good main crop variety. It is hardy and productive, very tender and sweet, and remains in this condition for a long time. Ears about eight inches long, sixteen or eighteen rowed. Stalks grow to a good size. Prices, Postpaid, Packet, 10c; ½ Lb. 25c; 1 Lb. 35c; 2 Lbs. 65c; 5 Lbs. \$1.35, Postpaid.

Golden Bantam Every home garden should include some of this superb corn. It is without a doubt the

sweetest and richest flavored corn known. True the ears are small, but the quality is wonderful, and is very tender. The corn is vigorous growing, producing ears of eight rows and about five inches long. The grain is broad, and a rich golden color. Remember that this is a sugar corn, and should not be confused with the yellow field corn of this section. Prices, Postpaid, Packet, 10c; ½ Lb. 25c; 1 Lb. 35c; 2 Lbs. 65c; 5 Lbs. \$1.35.

SNOWFLAKE. Popular Roastingear Corn	Pkt. 10c	Lb. 25c	2 Lbs. 45c	5 Lbs. 85c	Postpaid
CHAMPION WHITE PEARL. Good for market and home use	10c	25c	45c	85c	Postpaid
TRUCKERS FAVORITE. One of the best early corns	10c	25c	45c	85c	Postpaid

These varieties mature for roastingears in about 100 days. These are not sweet corns. The three varieties listed above mature about the same time.

KOHL RABI

One ounce will sow about 300 feet of drill. **Culture:** Drill and cultivate the same as spring turnips.

Early White Vienna Very early with small tops. Bulbs medium sized, white and of fine quality. Prices, Packet, 10c; Oz. 25c; ¼ Lb. 65c; Lb. \$2.25, Postpaid.

MUSTARD

One ounce will sow 200 feet of drill. Four pounds to the acre.

Culture: Sow either broadcast or in drills one foot apart. If sown in drills thin out after some time to one foot apart.

Japanese Mustard Spinach A quick growing vegetable of Oriental origin. Can be cut 4 weeks after planting. The large oblong leaves are dark green in color and are cooked and prepared for the table the same as Spinach and Turnip or Mustard greens. Will stand extreme summer heat and is resistant to cold. Also known as TENDERGREEN. Oz. 10c; ¼ Lb. 25c; Lb. 65c, Postpaid.

Southern Giant Curled

The best variety for the South. Leaves are light green, frilled and much crimped. Prices, Packet, 5c; Oz. 10c; ¼ Lb. 20c; 1 Lb. 60c, Postpaid.



Southern Giant Curled Mustard

Florida Broad Leaf Rather tall, upright, plants with much more leaf growth than other kinds. Leaves large, broad, rather smooth and with broad midribs. Leaves when boiled are of excellent quality. This fine smooth-leaved Mustard stays in eating condition without running to seed considerably longer than other varieties. It is valuable and popular. Packet, 5c; Oz. 10c; ¼ Lb. 20c; Lb. 60c.

EGG PLANT

1 Packet for 50 Feet of Row.

One ounce will produce 1,000 to 2,000 plants. **Culture:** Sow in hot beds in February. Pot in small pots and bury the pots in the garden. Plant out of the pots in the latter part of April or the first of May. Egg plant seed require a high temperature in which to germinate. Do not transplant into the open ground until warm weather has thoroughly set in. Allow 3 feet between rows and 2 feet apart in row.

Black Beauty The best of all. Fruit large, handsome shape and of a rich, glossy black color. It is as early as any, very productive and thornless. Our stock is excellent. Packet, 10c; Oz. 35c; ¼ Lb. \$1.00; Lb. \$3.50, Postpaid.

New York Improved Large Purple Fruit large, good shape and of a dark purple color, very productive and spineless. Packet, 10c; Oz. 35c; ¼ Lb. \$1.00; Lb. \$3.50, Postpaid.

KALE OR BORECOLE

Long Standing Curled Siberian

The green leaves are very large and comparatively plain in the center, but heavily curled on the edge. It is a fast grower, extremely hardy and will stand longer in the spring without bolting than any other variety. Packet, 5c; Oz. 15c; ¼ Lb. 30c; Lb. 75c, Postpaid.

OKRA

One ounce will plant 100 hills

Dwarf Green Plants two feet high, of stocky growth and very prolific. Pods long, dark green, and matures early. The best green podded variety. Packet, 5c; Oz. 10c; ¼ Lb. 20c; Lb. 50c, Postpaid.

White Velvet Plant of rather tall growth, bearing a large crop of white smooth pods. Packet, 5c; Oz. 10c; ¼ Lb. 20c; Lb. 50c, Postpaid.

Perkins' Long Green Height three to four feet. Pods deep green, long and slender. Very productive. Packet, 5c; Oz. 10c; ¼ Lb. 20c; Lb. 50c, Postpaid.

Parsnip. Hollow Crown or Sugar Very tender white root, with smooth clear skin. Packet, 10c; Oz. 15c; ¼ Lb. 75c, Postpaid.

Kale Early Green Curled Siberian Most vigorous growing variety. The large green leaves have a distinctive bluish tinge, smooth in the middles but with cut and beautifully fringed edges. Extremely hardy, extensively grown for greens. Packet, 5c; Oz. 10c; ¼ Lb. 25c; Lb. 75c, Postpaid.

LETTUCE

One Ounce will Produce 3,000 Plants

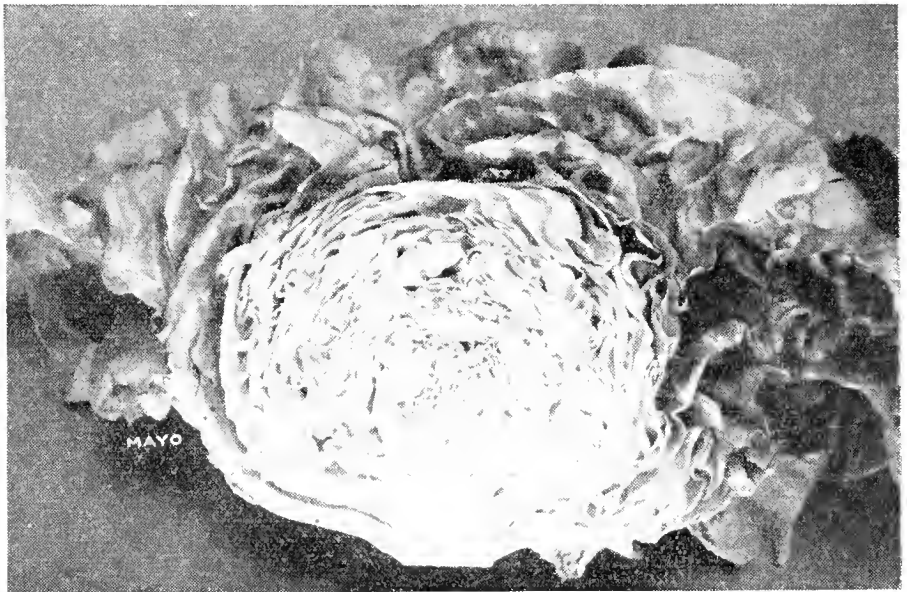
CULTURE: Sow out of doors from March to June. Sow in August and September for late use. Heading varieties must be transplanted to secure best results. Thin the loose leaved varieties to 5 inches apart.

Big Boston

We recommend this for quick heading. Good for outdoor or forcing. Plants large, very hardy and vigorous; leaves broad, smooth at the center but wavy at the edge. They are thin, very hard and crisp; color bright light green. Packet 10c; Oz. 15c; $\frac{1}{4}$ Lb. 30c; Lb. \$1.00, Postpaid.

Grand Rapids

This is the best variety for greenhouse forcing. It is of quick growth, little liable to rot and remains in good condition several days after being fit to cut. The plant is upright, and forms a loose cluster of large, thin, bright green leaves, decidedly crimped. This stands shipping well. Packet 5c; Oz. 15c; $\frac{1}{4}$ Lb. 30c; Lb. \$1.00, Postpaid.



Big Boston Head Lettuce

California Cream Butter Lettuce BUTTER HEAD TYPE. Known as "Royal" in some localities. Good for open ground planting at all seasons in the South. Heads large and solid, the inside bleaching to a beautiful cream yellow when properly grown. The pure strain of this variety can be distinguished by the small bronzy spots on the outer leaves. You will be delighted with this sweet, crisp lettuce. Packet, 10c; Oz. 15c; $\frac{1}{4}$ Lb. 40c; Lb. \$1.25, Postpaid.

Black Seeded Simpson The best variety for sowing out of doors where a loose leaf sort is needed. Leaves are slightly ruffled, and even the outer ones are very tender and crisp. Remains in good condition for a long time. Packet, 5c; Oz. 15c; $\frac{1}{4}$ Lb. 30c; Lb. \$1.00, Postpaid.

ONION SEED

Yellow Globe Danvers Best color, and largest yielder of any yellow onion. The bulbs are large and round, with very small necks. Rich orange-yellow color. Splendid keeper. Prices, Packet, 10c; Oz. 30c; $\frac{1}{4}$ Lb. 90c; 1 Lb. \$3.10, Postpaid.

Red Wethersfield An old variety but popular. Strong flavor, good keeper. Packet, 10c; Oz. 30c; $\frac{1}{4}$ Lb. 80c; Lb. \$2.75.

Prizetaker Very large, handsome, and nearly round in form. Skin, yellowish brown; flesh white, mild and tender. This is one of the European varieties. If started in hot beds, it will produce a large onion the first season. Prices, Packet, 10c; Oz. 25c; $\frac{1}{4}$ Lb. 75c; 1 Lb. \$2.50, Postpaid.

CRESS

Fine Curled—Pepper Grass

Packet, 5c; Oz. 15c; $\frac{1}{4}$ Lb. 25c; Lb. 60c, Postpaid.

Water Cress Packet, 10c; Oz. 35c; $\frac{1}{4}$ Lb. 90c; Lb. \$3.25, Postpaid.

COLLARDS

One ounce will produce about 3,000 plants. Culture: Same as cabbage.

Southern or Georgia The most popular collard for the South. Packet, 5c; Oz. 10c; $\frac{1}{4}$ Lb. 20c; Lb. 60c, Postpaid.

PARSLEY

Champion Moss Curled A compact growing variety. Leaves well curled and of a dark green color. Packet, 10c; Oz. 15c; $\frac{1}{4}$ Lb. 30c; Lb. 75c., Postpaid.

ONION SETS

POTATO ONION SETS
YELLOW DANVER ONION SETS
WHITE MULTIPLIER ONION SETS

The above varieties are generally used in the Knoxville area. Prices on these change rapidly. When you want to buy, please write us for prices stating the approximate quantity you will want.

MAYO'S CRYSTAL WAX BERMUDA ONION PLANTS

The most attractive onion. Pure white and waxy. Very mild in flavor. Be sure and have these in your garden. They are as good for pulling green as they are for use after maturing. Prices postpaid; 200 plants 50c. (No order filled for less than 200 plants) 500 plants 95c; 1,000 or more plants, \$1.65 per 1,000 postpaid to your address. Write for not postpaid prices on larger quantities. NOTE—Plants are usually shipped separate from seed orders. No plants shipped C. O. D.

MUSKMELON

ONE OUNCE WILL PLANT 30 HILLS. 1 TO 2 POUNDS IN HILLS TO THE ACRE
MAYO'S MUSKMELON SEEDS

For over 50 years Mayo's Muskmelon Seeds have been the real standard of the Knoxville Market. Our Melon Seeds are grown especially for us. It is not just an accident that Mayo's Melon Seeds have given universal satisfaction for many years. This represents the service which we have given to our customers year in and year out for a half century.

Honey Rock Also known as sugar rock. A gold medal winner in 1933. All-American Selection. Almost round, 5 inches across, rich salmon colored flesh, fine grained. Gray-green skin. Coarse netting. Very uniform in ripening. An early melon for home use and for shipping to nearby markets. Packet, 10c; Oz. 20c; $\frac{1}{4}$ Lb. 45c; Lb. \$1.40, Postpaid.

Banana Shaped and flavored like the Banana. Melons 12 to 20 inches long and 2 to 5 inches in diameter. Flesh thick and orange in color. Postpaid, Packet 10c; Oz. 15c; $\frac{1}{4}$ Lb. 40c; Lb. \$1.25.

Emerald Gem A splendid early variety, coming in just ahead of Rocky Ford; fruit emerald green in color; globular or slightly flattened, irregularly ribbed and lightly netted; flesh very thick, of a deep rich salmon color, and having an exceedingly small seed cavity. Packet, 10c; Oz. 15c; $\frac{1}{4}$ Lb. 40c; Lb. \$1.25, Postpaid.

Tip Top A splendid variety for home and market garden use to nearby markets. Fruits large, slightly oval, weight 6 to 7 pounds; skin pale green, turning to yellow at maturity; distinctly ribbed and slightly netted. Flesh bright salmon, sweet and delicious. The most popular large melon on the Knoxville market. Packet, 5c; Oz. 15c. $\frac{1}{4}$ Lb. 40c; Lb. \$1.25, Postpaid.

Rocky Ford Most popular small melon. Fruit oval, densely covered with a fine netting. Flesh thick, green and highly flavored. Packet 5c; Oz. 10c; $\frac{1}{4}$ Lb. 30c; Lb. 90c, Postpaid.

Honey Dew The delicious honeylike flavor of this new melon has met with instantaneous public favor wherever used. The fruit is of large size, weighing eight to ten pounds each. The rind is perfectly smooth and cream colored. The flesh is from one and one-half to two inches thick, light green in color, very sweet and juicy. Packet, 10c; Oz. 20c; $\frac{1}{4}$ Lb. 45c; Lb. \$1.35, Postpaid.

Hearts of Gold, or Hoodoo A new orange-fleshed variety, ideal as a shipping melon and of the very finest quality. Vine vigorous, remarkably blight-resisting and very productive. Fruit of medium and very uniform size. Netting exceptionally fine and dense, extending practically over the entire surface. Rind thin, yet very firm, so that the melons arrive in perfect condition in distant markets. Flesh thick, firm, highly colored, of fine texture and delicious flavor. One of the best market melons offered today. Packet, 10c; Oz. 15c; $\frac{1}{4}$ Lb. 40c; Lb. \$1.25, Postpaid.

Improved Perfecto 1933 All-America Selection. Award of Merit Winner. Good, uniform netting, unnoticeably slight ribs, almost round, 6 by 5 in. in size, seed cavity triangular, with thick, sweet, spicy flesh. It has so-called pink meat, is ready to eat in about 96 days, of delicious eating quality and desirable for home gardens, marketing and shipping. It is a new type of Rocky Ford, but far surpasses that variety. It is sure to supersede most of the older shipping varieties, now that we have this type selected to the uniform, round, heavy, typically Cantaloupe requirements. It's just about perfection, all right, and you will find that our specially selected seed will certainly pay fine dividends in bumper crops of uniformly sweet, tender, and real marketable melons. Packet, 10c; Oz. 15c; $\frac{1}{4}$ Lb. 40c; Lb. \$1.25, Postpaid.

Honey Ball Melon A cross between the Honey Dew and Texas Cannonball. Uniform in size, melons about half the size of Honey Dew. Easily grown, stands hot sun and can be left on vines until fully ripe. Almost ball shaped, lightly netted; thick, light green flesh of sweet spicy flavor. Keeps well in storage and is a fine shipper. Fast becoming popular as a market melon. Like Honey Dew, should be fully ripe for eating. Packet, 10c; Oz. 20c; $\frac{1}{4}$ Lb. 50c; Lb. \$1.50, Postpaid.

Lake Champlain An exceedingly early salmon-fleshed Melon of medium size and fine quality, evidently a cross between Fordhook and Emerald Gem as it has a tendency to produce Melons resembling both types. We do not recommend this as a shipping Melon as it ripens up quickly, but it is an excellent sort for local markets as it is very early, good size and it is of excellent quality. Packet 10c; Oz. 15c; $\frac{1}{4}$ Lb. 40c; Lb. \$1.25, Postpaid.

Burrell Gem Color is really an orange salmon. Heavy in weight owing to its very thick meat which makes it a good shipper or for trucking long distances. Seed cavity small, thick, firm flesh of spicy flavor. Medium maturity and prolific. Packet, 5c; Oz. 10c; $\frac{1}{4}$ Lb. 30c; Lb. \$1.00, Postpaid.

Large Hackensack An old-time favorite. Matures in about 94 days. Melons large, quite flattened in shape, well ribbed and netted. Flesh is remarkably thick, light green in color, sweet and spicy flavor. A medium early maturing melon for home use and nearby markets. Packet, 5c; Oz. 15c; $\frac{1}{4}$ Lb. 40c; Lb. \$1.25, Postpaid.

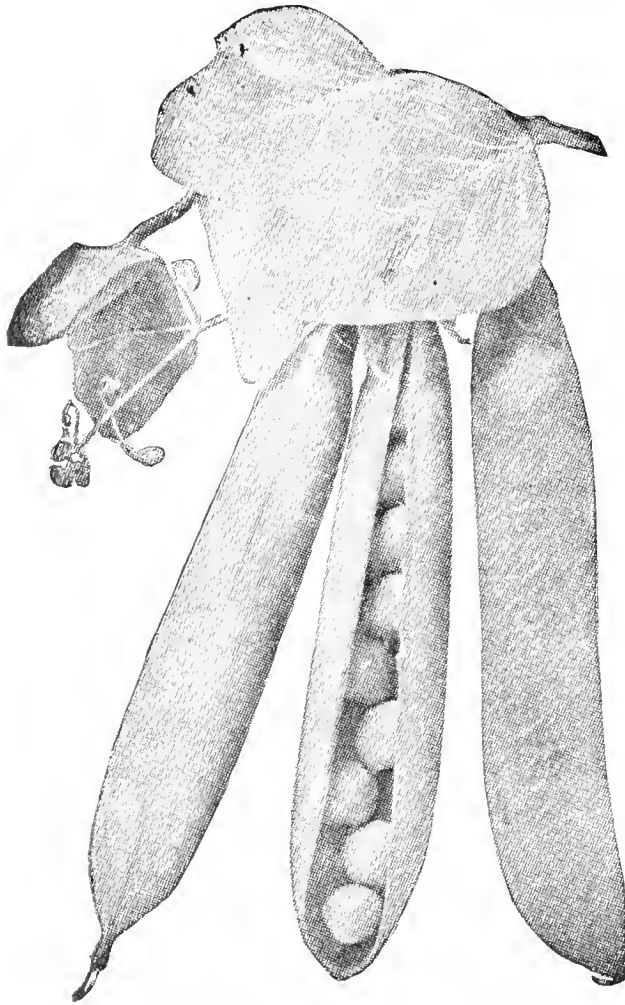
Hale's Best Exceptionally extra early variety of fine flavor, originating in California's famous Imperial Valley. It is also of the general Rocky Ford type and of remarkable flavor for a salmon fleshed Cantaloupe. The rich salmon flesh is very thick, leaving only a very small triangular seed cavity. Fruits are oval shaped, about 8 by 4 $\frac{1}{2}$ inches, with a heavy netting and ribs hardly apparent. Hale's Best is a superb shipper, commands a good price and will be of greatest value as an early shipping melon. Packet, 10c; Oz. 15c; $\frac{1}{4}$ Lb. 40c; Lb. \$1.25, Postpaid.

Please remember that we can name much lower prices on seeds in larger quantities where you pay the transportation charges. Write us at any time for these prices, stating the items you need and the approximate quantity.

GARDEN PEAS

One Pound will plant 50 feet of drill. 100 pounds to the acre.

CULTURE: Plant the early or smooth varieties in February. Plant the sugar or wrinkled varieties from February to May in accordance with the season. The late varieties must be stuck on poles. Plant in furrows three or four inches deep and have the furrows three feet apart. Cultivate like corn.



EXTRA EARLY GARDEN VARIETIES

Mayo's First and Best Just a day or so earlier than the Alaska. Vines hardy and productive, and are from 2½ to 3 feet high, bearing three to seven pods, each containing five to seven medium sized peas of good quality. The seed are small sized, smooth, yellowish white. Matures practically the whole crop at the same time. Packet, 10c; ½ Lb. 20c; Lb. 30c; 2 Lbs. 50c; 5 Lbs. \$1.00, Postpaid.

Alaska Best. Grows very similar to the First and Best. This variety is largely used by canners. Very early, and matures practically the whole crop at the same time. Seed small, smooth and bluish-green in color. Packet, 10c; ½ Lb. 20c; Lb. 30c; 2 Lbs. 50c; 5 Lbs. \$1.00, Postpaid.

Thomas Laxton A very popular, medium early variety, good for market gardens, shipping and canning. Vine medium green and medium heavy. Pods single, medium green, plump, broad, blunt; contains 7 to 8 large, tender peas of good quality. Seeds medium size, cream and green. Packet, 10c; ½ Lb. 20c; Lb. 30c; 2 Lbs. 50c; 5 Lbs. \$1.00, Postpaid.

Laxtonian Pea Grows about 18 inches high. Vines make a vigorous growth which enables them to withstand the weather conditions. The Podded variety is filled out with yellow peas which have an excellent flavor. Packet, 10c; ½ Lb. 20c; Lb. 30c. 2 Lbs. 50c; 5 Lbs. \$1.00, Postpaid.

Sugar or Salad Pea Distinct, with edible pods cooked and eaten same as snap beans. Packet, 10c; ½ Lb. 20c; Lb. 35c; 2 Lbs. 60c; 5 Lbs. \$1.15, Postpaid.

Nott's Excelsior A medium-early wrinkled sort of dwarf habit. Pods are numerous and well filled, being quite broad. The quality is pronounced the best of any. Height, fourteen inches. Packet, 10c; ½ Lb. 20c; Lb. 30c; 2 Lbs. 50c; 5 Lbs. \$1.00, Postpaid.

Champion of England Old-time, tall-growing favorite. Productive and of fine quality. Seed wrinkled, pods large. Packet, 10c; ½ Lb. 20c; Lb. 30c; 2 Lbs. 50c; 5 Lbs. \$1.00, Postpaid.

Telephone An old, popular variety, producing very large pods of a medium green color, filled with large peas of the very finest quality. Height, three and a half feet. Packet, 10c; ½ Lb. 20c; Lb. 35c; 2 Lbs. 55c; 5 Lbs. \$1.10, Postpaid.

Sugar Crowder Peas Early in maturity, very prolific and best flavored of large seeded table peas. Good for soil improvement as well as food. Packet, 10c; Lb. 30c; 2 Lbs. 50c; 5 Lbs. \$1.00, Postpaid.

Large Black Eye Standard large black eye peas, good for either "snaps," shelled green, or dry. Vines strong growing and most prolific of the black eye sorts. Packet, 10c; Lb. 25c; 2 Lbs. 45c; 5 Lbs. 85c; Postpaid.

Lady Peas Smallest seeded but sweetest and most delicately flavored of all this class for table use. Packet, 10c; Lb. 30c; 2 Lbs. 50c; 5 Lbs. \$1.00, Postpaid.

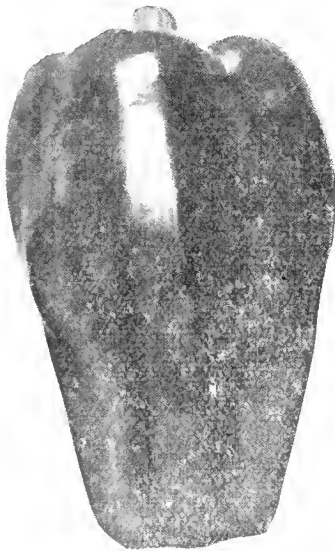
In this catalog we are listing most of the new varieties both in seeds and flowers. Many of these have won gold medal awards in '33, and '34. No doubt, you will be interested in these and will want to grow them. Please write us at any time for information and prices on larger quantities.

PEPPER

1 packet for 50 feet of row. One ounce of seed for 1,000 to 1,500 plants

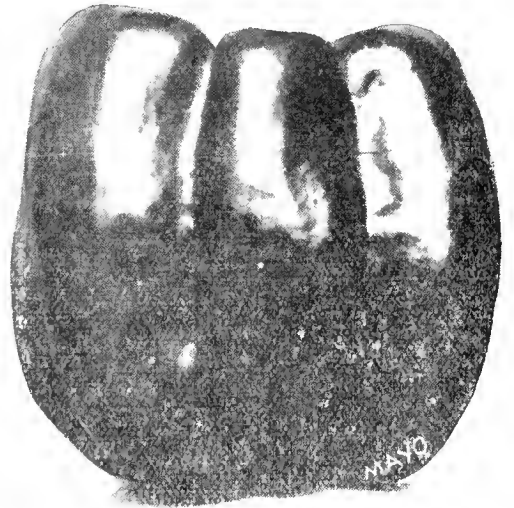
CULTURE: Sow the seed under glass about the last of February. When the plants are two or three inches high remove to larger flats 2 inches apart each way. Transplant into rich open ground as soon as all danger of frost is over. Make transplanted rows two to three feet apart, and 15 to 18 inches apart in the rows.

California Wonder The best of all sweet peppers. Full grown fruits about four inches in breadth and length of four and one half inches, not unusual for specimens to weigh a pound. Smooth attractive dark green fruit turning to bright crimson when dead ripe. Very thick flesh which is sweet, crisp, tender, mild and free from pungency. Postpaid, packet, 8c; 1/2 ounce, 29c; Ounce 49c; 1/4 Lb. \$1.45; Lb. \$4.95.



Ruby King Pepper

World Beater An outstanding strain of Royal King type bell Pepper. Vigorous grower, sure cropper and very prolific. Fruits turn a beautiful scarlet, exceedingly mild; flesh thick and firm and an excellent shipper. Slightly more elongated than Royal King and usually slightly larger. Flesh is mild and the lobes quite well filled out. It runs remarkably true to type and uniformity, and plants are of strong, stocky, erect growth. Taste it raw, stuff it with meat and bake it, or fill it with salads. Its attractive appearance assures it on the market. Packet, 10c; 1/2 Oz. 20c; Oz. 30c; 1/4 Lb. 90c; Lb. \$3.00, Postpaid.



Bull Nose or Large Bell Pepper

Ruby King A leading variety of sweet Pepper for home and market use. Very vigorous grower with large, sweet, mild fruits. A close favorite with Large Bell or Bull

Nose, slightly larger in size and certainly much sweeter and milder than that variety. Plants are about 2 1/2 feet high. Fruits are often 4 inches long, deep green when young, turning bright red. With its mild, thick flesh, is fine for mangoes or stuffed peppers. Packet, 10c; 1/2 Oz. 20c; Oz. 30c; 1/4 Lb. 90c; Lb. \$2.75, Postpaid.

Bell or Bullnose The old time favorite of home gardens, giving a wonderful crop of bright green peppers, turning a brilliant red in maturity. Quite early and very prolific and bound to please for any purpose a sweet pepper can be used. Packet, 5c; 1/2 Oz. 15c; Oz. 25c; 1/4 Lb. 75c; Lb. \$2.25, Postpaid.

Chinese Giant Plant dwarf, fruit of mammoth size, very broad but rather short. It is very late and a rather shy yielder. Popular on account of its large size and mild flavor. Our stock is pure and is as good as can be obtained. Packet, 10c; Oz. 40c; 1/4 Lb. \$1.35; Lb. \$4.90, Postpaid.

Long Cayenne Hot. This is a long red pod pepper of true Cayenne type for drying for winter use. Packet, 10c; 1/2 Oz. 20c; Oz. 30c; 1/4 Lb. 90c; Lb. \$3.00, Postpaid.

Perfection Pimiento Sweetest and mildest of all peppers and planted widely throughout the South for use for table, canning, market, and commercial purposes. Packet, 10c; Oz. 25c; 1/4 Lb. 60c; Lb. \$2.00, Postpaid.



Kentucky Field Pumpkin

PUMPKIN

Green Striped Cashaw Crooked or curved neck. Best of all the Cashaw varieties. Good size, mottled green striped with white. Flesh rich creamy yellow, fine grained, thick. Packet, 10c; Oz. 15c; 1/4 Lb. 30; Lb. 90c, Postpaid.

Tennessee Sweet Potato Pear shaped, slightly ribbed. Hardy and keeps late. Looks like sweet potato when cooked. Packet, 5c; Oz. 10c; 1/4 Lb. 25c; Lb. 75c, Postpaid.

Sweet or Sugar Small size, very prolific. Best of all for sweet flavor and fine for home use in pies and baking. Has rich deep orange skin. Packet, 5c; Oz. 10c; 1/4 Lb. 25c; Lb. 75c, Postpaid.

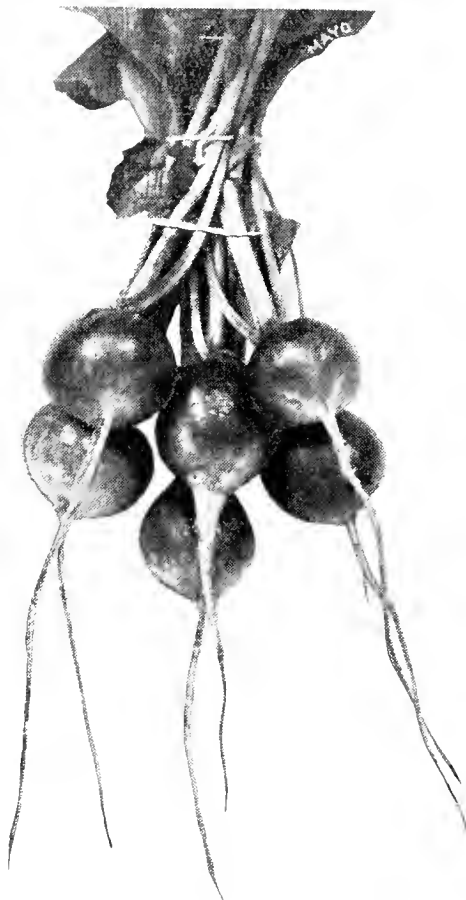
Kentucky Field The standard variety of Field Pumpkins. These are generally planted for field crops throughout this section. This is one of the best keeping varieties known. It is suitable for table

use as well as stock feeding. This variety is particularly adapted to the South. It is the best variety for extra large fruits of splendid quality. Skin mottled light green and yellow, changing to a creamy yellow when they mature. Flesh yellow, tender and of excellent quality. Prices: Packet, 5c; Lb. 35c; 5 Lbs., \$1.25, Postpaid.

RADISH

(One Ounce will sow 100 feet of row.)

CULTURE: Sow early and often. Summer radishes mature in 4 to 6 weeks from planting. Plant in rows one foot apart, and sow the seed thick enough to require thinning. Sow the winter varieties in August.



Early Scarlet Turnip Radish

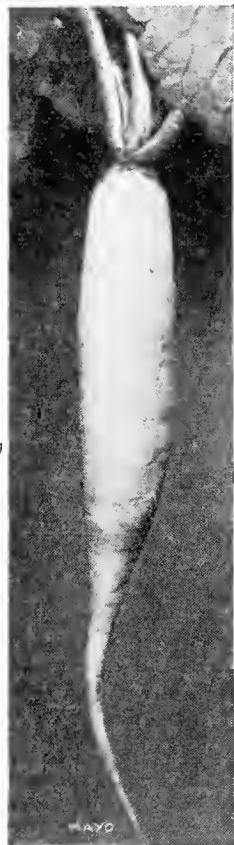
Long White Icicle 26-27 days. Early as Long Scar-
let Short Top, but a deeper red in color and remains a little longer in condition for use. Packet, 5c; Oz. 10c; ¼ Lb. 20c; Lb. 65c, Postpaid.

Cincinnati Market Similar to Long Scar-
let Short Top, but a deeper red in color and remains a little longer in condition for use. Packet, 5c; Oz. 10c; ¼ Lb. 25c; Lb. 70c, Postpaid.

Early Long Scarlet Short Top A popular long red variety grown extensively in the South. Packet, 5c; Oz. 10c; ¼ Lb. 20c; Lb. 65c, Postpaid.

Early Scarlet Turnip Small top, quick growth, mild and crisp. Prices: Packet, 5c; Oz. 10c; ¼ Lb. 20c; 1 Lb. 65c, Postpaid.

Early Scarlet Turnip, White Tipped One of the most attractive and popular of the early turnip sorts. The roots are slightly flattened, the upper portion a deep scarlet and the under portion white, making a beautiful contrast. Packet, 5c. Oz. 10c; ¼ Lb. 20c; Lb. 65c, Postpaid.



Long White Icicle Radish

Vick's Scarlet Globe One of the most popular of all the turnip rooted radishes. It is of quick growth, small leaves and fine quality. Packet, 5c; Oz. 10c; ½ Lb. 20c; 1 Lb. 70c, Postpaid.

RADISH—Winter Varieties

Scarlet China One of the most popular fall and winter sorts. Roots about six inches long. Skin smooth and of a bright rose color. Flesh very firm and crisp. Packet, 10c; Oz. 15c; ¼ Lb. 25c; Lb. 75c, Postpaid.

Long Black Spanish A leading winter variety, one of the best keepers. Roots, cylindrical, 7 to 10 inches long; skin blackish-brown; firm white flesh. Packet, 10c; Oz. 15c; ¼ Lb. 30c. Lb. 80c, Postpaid.

Round Black Spanish Roots round, sometimes top-shaped, good keeper. Packet, 10c; Oz. 15c; ¼ Lb. 30c; Lb. 80c, Postpaid.

California Mammoth White An excellent Fall variety. Roots 7 to 8 inches long, 2 inches thick; cylindrical and thickest at lower end. Leaves large, light green; flesh white, crisp and not pungent. Packet, 10c; Oz. 15c; ¼ Lb. 30c; Lb. 80c, Postpaid.

RHUBARB or PIE PLANT ROOTS

Strong healthy roots, 65c per dozen, postpaid.

SALSIFY or OYSTER PLANT

Mammoth Sandwich Island A popular Market Garden sort, producing good size roots; comparatively smooth. Packet 10c; Oz. 20c; ¼ Lb. 55c; Lb. \$1.75, Postpaid

Please remember that we can name much lower prices on seeds in larger quantities where you pay the transportation charges. Write us at any time for these prices, stating the items you need and the approximate quantity.

SPINACH

CULTURE Requiring but little culture, it is one of the most easily managed of all vegetables. The main crop is sown from September until November. For summer use it may be sown at intervals of two or three weeks, from March to August. One ounce to 100 feet of row; 10 to 12 pounds to an acre.

Bloomsdale Savoy Leaf A first early, vigorous variety, desirable for local gardens, for shipping to distant markets, and for canning. Plants erect in growth, hardy and attractive. Leaves large, crumpled, somewhat blistered; dark glossy green. Seeds fairly early. Packet, 5c; Oz. 10c; $\frac{1}{4}$ Lb. 20c; Lb. 50c, Postpaid.

New Zealand Thrives during the hottest weather in any soil, rich or poor. The tender tips may be cut every few days, and continues till frost. When the ground is thoroughly warm, soak for 24 hours and plant 4 seeds in hills 2 feet apart each way. Packet, 5c; Oz. 10c; $\frac{1}{4}$ Lb. 20c; Lb. 65c, Postpaid.

SQUASH

CULTURE: Plant in hills same as melon and cucumber.

One Ounce of Seed will Plant 25 Hills. 3 to 4 Pounds to the Acre

Hubbard One of the best winter squashes; flesh bright orange yellow, fine grained, very dry, sweet and richly flavored. Fruit large, oval-shaped; skin dark green, rough, covered with warts. Excellent keeper. Packet, 10c; Oz. 20c; $\frac{1}{4}$ Lb. 40c; Lb. \$1.35, Postpaid.



Fordhook Squash

Fordhook A splendid baking squash for Summer use. Flavor, somewhat resembles the sweet potato and for this reason it is sometimes called the sweet potato squash. Fruits are oblong, from 6 to 8 inches long and slightly ridged. Smooth yellow skin, flesh thick and light yellow. This is a favorite on the Knoxville market and in our opinion is the best flavored squash in existence. Packet, 5c; Oz. 15c; $\frac{1}{4}$ Lb. 40c; Lb. \$1.15, Postpaid.

Early White Bush Patty Pan

The most popular of white summer types of squash. The fruits are rather small, quite flat, with ridges or scalloped edges. The vines are bushy, and the fruits are 8 inches across by 3 inches in diameter. Packet, 5c; Oz. 15c; $\frac{1}{4}$ Lb. 35c; 1 Lb. 90c, Postpaid.

Golden Summer Of dwarf, bushy habit; very productive; bears early and continues through the summer; of rich golden yellow color thickly warted and of excellent quality. Meaty and nearly the equal of the winter squashes in flavor. Packet, 5c; Oz. 10c; $\frac{1}{4}$ Lb. 30c; Lb. 90c, Postpaid.

NEW ITEMS LISTED IN OUR CATALOG THIS YEAR

CARROT. Morse's Bunching.

BEAN. TENDERGREEN NEW STRINGLESS.

TOMATO. Asgrow Scarlet Dawn.

LIMA BEAN. Jackson Bush Lima.

MUSKMELON. Improved Perfecto.

LETTUCE. California Cream Butter.

ALSO MANY NEW FLOWERS SEEDS

TOMATO

1 packet for 50-ft. of row 4 ounces to acre.

One ounce will produce 3,000 to 4,000 plants.

CULTURE: Start under glass in February, and transplant into the open after all danger of frost is over. For the main crop, sow seed later in hot beds and transplant into the open five feet apart each way.

Brimmer The largest of all Tomatoes. There is no tomato that can compare with Brimmer. It is very productive, meaty, solid, and has a splendid flavor. Coreless. Fruit pink and free from acid. **Prices; Packet, 10c; ½ ounce, 35c; Ounce 55c; ¼ Lb. \$1.90; Lb. \$7.25, Postpaid.**

Oxheart Vine is open, spreading, moderately productive. Fruits extremely large, somewhat rough, heart shaped pink; very solid, meaty and of fine flavor. Almost seedless. **Prices, Packet, 15c; Oz. 55c; ¼ Lb. \$1.90; Lb. \$6.50, Postpaid.**

Mayo's June Pink The best extra early T o m a t o. Purplish pink tomatoes of good quality. Matures in about the same time as the Earliana, but is a better Tomato. **Postpaid; Packet, 10c; ½ Oz. 25c; Oz. 40c; ¼ Lb. \$1.15; Lb. \$3.90.**

Marglobe WILT RESISTANT. Main crop, scarlet-fruited globe shaped variety, originated by the U. S. Dept. of Agriculture. Fruits medium size, smooth, solid and deep. Set in clusters of 5 to 7; cell structure irregular. **Packet, 10c; ½ Oz. 25c; Oz. 40c; ¼ Lb. \$1.00; Lb. \$3.50, Postpaid.**

Ponderosa A purple fruited tomato of large size. Vine vigorous. Fruit very solid, fairly smooth and very good quality. This variety is more suitable for home use than for the market. **Packet, 10c; Oz. 40c; ¼ Lb. \$1.35; Lb. \$5.00, Postpaid.**

Golden Queen Handsomest and best large smooth golden yellow T o m a t o; meaty, solid and sweet. **Packet, 10c; ½ Oz. 25c; Oz. 40c; ¼ Lb. \$1.25; Lb. \$4.50, Postpaid.**

Bonny Best An early variety maturing a little later than Earliana. Fruit medium size, color bright scarlet, exceedingly smooth, handsome shape, ripens evenly close up to the stem. It is very prolific. **Packet, 10c; Oz. 30c; ¼ Lb. 85c. Lb. \$2.90, Postpaid.**

Asgrow Scarlet Dawn All - America, 1935. Outstanding new medium early globe-shaped variety that bids for the highest place as an early main crop market variety as well as a home garden sort. **Packet, 15c; Oz. \$1.00.**

Yellow Ponderosa A very large, mild flavored sort, desirable for the home garden for late maturity. Vine large, spreading, strongly resistant to wilt. Fruits very large, flat, somewhat rough, deep yellow; quite solid, with small seed cells. Fine flavor. **Packet, 10c; ½ Oz. 25c; Oz. 45c; ¼ Lb. \$1.35. Lb. \$4.95, Postpaid.**

Gulf State Market Best shipping variety. Earliest purplish pink, strong vines, heavy globe shape, free from cracks and blemishes at blossom end. Fruit in same cluster ripen uniformly, so economical to pick. **Packet, 10c; ½ Oz. 25c; Oz. 40c; ¼ Lb. \$1.15; Lb. \$3.75, Postpaid.**

Break O'Day EARLIEST WILT RESISTANT. Plant light, for open, spreading habit, medium foliage, early and very prolific. Fruit medium large, scarlet, uniform, globe-shaped, smooth. Outside walls are rather thick. **Packet, 10c; ½ Oz. 25c; Oz. 40c; ¼ Lb. \$1.15; Lb. \$3.75, Postpaid.**

Pritchard Scarlet WILT RESISTANT. Gold Medal, 1933 All America. Several days later than Break O'Day; disease-resisting, heavily productive. Large, smooth, globular, solid, thick walled and heavy scarlet fruit. Wonderful market garden and shipping Tomato as well as for home use. **Packet, 10c; ½ Oz. 25c; Oz. 40c; ¼ Lb. \$1.25; Lb. \$4.00, Postpaid.**

Sparks Earliana The earliest tomato. Compact plants which are thickly covered with fruit. Tomatoes uniform in size and are fleshy and solid. **Packet, 5c; Oz. 25c; ¼ Lb. 80c; Lb. \$2.75, Postpaid.**

Mayo's New Stone The standard canning variety. Also one of the best main crop Tomatoes on the market. Very uniform in size, smooth and well shaped. **Packet, 5c; Oz. 22c; ¼ Lb. 65c; Lb. \$2.50, Postpaid.**

Greater Baltimore An excellent main-crop sort, producing large, solid, smooth fruit of a brilliant red color. It ripens evenly to the stem and is entirely free from ridges. Used extensively by canners. **Packet, 5c; ½ Oz. 15c; Oz. 25c; ¼ Lb. 70c; Lb. \$2.35, Postpaid.**

John Baer Medium sized, extra early; flesh firm, quality and scarlet color excellent, smooth, nearly round; vines of medium height and open growth, hardy and very prolific. Mild flavor, tough skin; valuable for market gardeners, canners and shippers. **Packet, 5c; ½ Oz. 15c; Oz. 25c; ½ Lb. 80c; Lb. \$2.75, Postpaid.**

WILT RESISTANT TOMATO COLLECTION

25c for 1 Packet Each. 65c for ¼ Oz. Each. Break O'Day, Pritchard Scarlet Topper and Marglobe.

MAYO'S FROST-PROOF CABBAGE PLANTS

Cabbage Plants are usually shipped separate from other items. At certain seasons of the year or under abnormal weather conditions these plants look like they are dead when they reach you but in nearly ever instance they will live if properly planted. Most of our plants are shipped from Knoxville but we reserve the right to ship these from our growing stations in the South if we can do so to a better advantage.

VARIETIES. Charleston Wakefield and Early Flat Dutch.

POSTPAID PRICES. 100 Plants of either of the above varieties, 50c postpaid. No order for less than 100 plants of the same variety filled. All orders for less than 250 of the same variety take the 100 rate.

250 Plants of the same variety, 75c; 500 of the same variety, \$1.25, 1000 or more of the same variety for \$2.00.

The above prices are all postpaid to you. Write us for prices on larger lots for shipment by express. We expect to be able to ship plants in ANY quantity.

TURNIPS

CULTURE: Turnips are easily grown in early spring as well as late summer and fall in the upper South and in the lower South may be planted all winter. 1 ounce of seed sows 200 feet of row; 2 to 3 pounds per acre. Ready for use in 8 to 10 weeks.



Purple Top Strap Leaved

Purple Top Flat Strap Leaf

An early flat sort; crown purplish-red, white below, flesh white. Packet, 5c; Oz. 10c; ¼ Lb. 20c; Lb. 50c, Postpaid.

Seven Top Cultivated for greens only. Prices: Packet, 5c; Oz. 10c; ¼ Lb. 20c; Lb. 45c, Postpaid

Shogoin or Japanese A new foliage turnip from Japan that has proved itself superior to most varieties. Resists heat, sun, dry weather and lice. Quickly produces an enormous upright-growing juicy foliage, usually two feet tall, which is crisp, tender and of fine flavor. The roots are large pure white, semi-globular, and of a most excellent quality for table use. Prices, Packet, 5c; Oz. 10c; ¼ Lb. 20c; Lb. 55c, Postpaid.

Cowhorn Long White. Roots long and carrot-shaped, one-third showing above ground. It roots deeply, resisting drought and cold. Flesh pure white, fine-grained, sweet and of excellent table quality. Packet, 5c; Oz. 10c; ¼ Lb. 20c; Lb. 50c, Postpaid.

Yellow or Amber Globe Best yellow low fleshed Turnip. Globe shaped, fine grained, sweet and a good keeper. Heavy cropper. Packet, 5c; Oz. 10c; ¼ Lb. 20c; Lb. 50c, Postpaid.

Extra Early Purple Top Milan White with purple top. Packet, 5c; Oz. 10c; ¼ Lb. 20c; Lb. 50c, Postpaid.

White Globe Large, globe shaped; pure white; good keeper. Prices: Packet, 5c; Oz. 10c; ¼ Lb. 20c; Lb. 50c, Postpaid.

Golden Ball or Orange Jelly One of the sweetest and best yellow turnips; hardy; flesh is firm and of most excellent flavor. Packet, 5c; Oz. 10c; ¼ Lb. 20c; Lb. 50c, Postpaid.

Purple Top White Our most popular variety. Medium early, globe shaped, handsome appearance and heavy cropper. For home use or market. Always good quality, good keeper. Packet, 5c; Oz. 10c; ¼ Lb. 20c; Lb. 50c, Postpaid.

SWEET POTATOES

About the 1st of April we can offer Sweet Potatoes. We usually have Nancy Hall, Triumph, Porto Rico, Southern Queen and Japanese Yams. Prices on potatoes change often. When you are ready to plant, please write us asking for prices and we will gladly quote the best price we can.

SWEET POTATO PLANTS

Sweet Potato Plants are usually ready to transplant about the 1st of May. We will be very glad to quote these at your request.

IRISH POTATOES

For many years we have been handling a very large volume of quality potatoes in the various varieties. Irish Cobblers is one of the largest sellers but we can also offer Red Bliss Triumph, Early Rose, Green Mountain, Spaulding Rose, and Jersey Redskin.

TOBACCO SEED

MAYO'S WHITE BURLEY (Judy's Pride strain) Packet 15c; 1 Oz., Acre size, 50c.

MAYO'S WHITE BURLEY (Blue Ribbon or Lockwood) Packet, 15c; 1 Oz., Acre size, 50c.

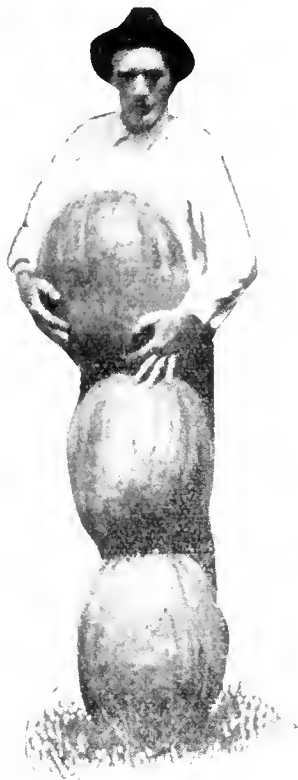
MAYO'S PRIDE

A SPECIAL STRAIN OF BRIGHT GOLDEN BURLEY TOBACCO

This new tobacco was introduced into East Tennessee last year. This variety has been thoroughly tested in East Tennessee. It produced a high grade of fine burley tobacco and is a root-rot resistant variety. This seed was grown on virgin soil from selected plants. Years of experience in growing this tobacco shows that it produces more pounds of salable tobacco to the acre and commands the highest market price. We believe you will be pleased with this tobacco. Postpaid, ½ Oz. Size 60c; 1 Oz. 90c.

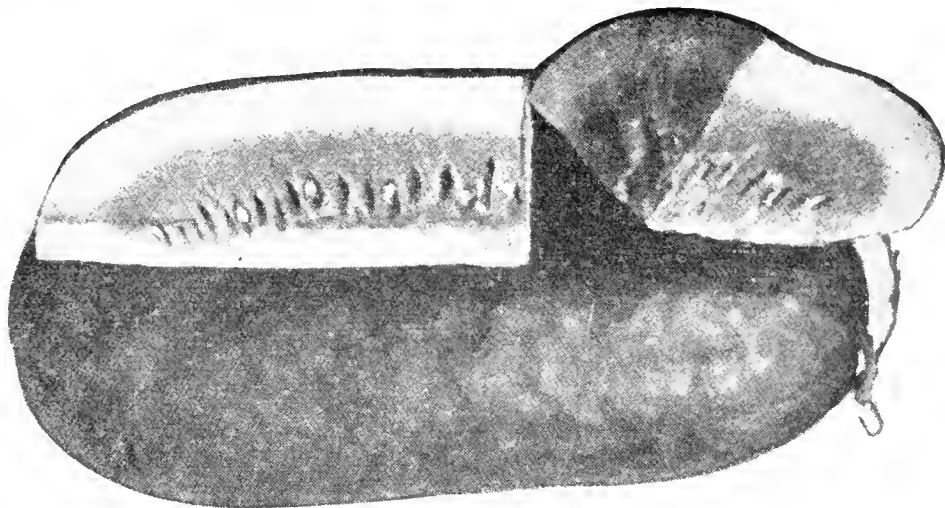
WATER MELONS

One ounce will plant 25 hills. 2 pounds to the acre.
CULTURE: Same as muskmelon.



Stone Mountain
Watermelon

Halbert's Honey Similar to Kleckley's Sweet but somewhat longer; desirable for home and market gardens but not for shipping. Fruits long; cylindrical, with blount ends, slightly ridged, dark green; rind very tender. Flesh bright red, and exceptionally sweet; seeds white with blackish tips. Packet, 5c; Oz. 10c; ¼ Lb. 25c; Lb. 75c, Postpaid.



Monte Cristo or Kleckley Sweet

Kleckley's Sweet, or Monte Cristo This very popular melon is one of the best for nearby markets. Fruit is medium size, oblong, of a dark green color, and has very thin rind. Flesh bright scarlet with solid heart, crisp, sugary and melting, and entirely free from stringiness. Packet, 10c; Oz. 15c; ¼ Lb. 30c; Lb. 75c, Postpaid.

Mayo's Irish Gray Melons are whitish gray, long shaped, often growing to a weight of forty pounds. The rind is tough, seed white, and flesh is bright red. Very productive. Melons sold well where ever offered during last few years. Splendid shipper. Prices: Packet, 10c; Oz. 15c; ¼ Lb. 25c; 1 Lb. 75c, Postpaid.

Tom Watson A large long melon with dark green rind and light crimson flesh of excellent quality. It is a splendid shipper and is being grown extensively in the South for Northern markets. Packet, 10c. Oz. 15c; ¼ Lb. 30c; Lb. 75c, Postpaid

Stone Mountain Watermelon This wonderful melon averages weight from 50 to 80 pounds on good melon soil. It is very sweet and delicious. For home use and for nearby market gardening use this is one of the best melons. It is round or square shape, rich dark green color, medium thickness of rind, rich scarlet flesh. It has very few seeds, is solid through and is almost all heart. It is very prolific and stands up well under trying conditions. It is especially adapted for a medium and late crop. The rind is rather tender and for this reason this melon will not stand shipping a great distance. Packet, 10c; Oz. 15c; ¼ Lb. 35c; 1 Lb. \$1.15, Postpaid.

Schochler An exceptionally large, main crop, shipping variety. Fruits very long, large, dark green, with very faint stripes; rind hard and tough. Flesh rich red, fine grained and of good quality. Packet, 10c; Oz. 15c; ¼ Lb. 35c; Lb. \$1.10, Postpaid.

MAYO'S 5 PACKET MELON COLLECTION

5 PACKETS, 1 OZ. EACH FOR 35c.

This collection of seed is sufficient to plant about one-fourth acre. This is about enough for the average family. For only 35c we will send you one ounce each of the following melons. Stone Mountain, Kleckley Sweet, Irish Gray, Tom Watson and Halbert's Honey. This will make a real patch.

MAYO'S ONE ACRE MELON COLLECTION

FIVE FULL QUARTER POUNDS FOR \$1.00.

For only \$1.00 we will send you one each of the varieties in the above collection containing one fourth pound each for \$1.00. This is a wonderful assortment, try them.

Please remember that we can name much lower prices on seeds in larger quantities where you pay the transportation charges. Write us at any time for these prices, stating the items you need and the approximate quantity.

FLOWER SEEDS

SOWING FLOWER SEEDS

CULTURAL DIRECTIONS: Light, rich loam is most suitable for flowers. The soil should be finely pulverized for best results. This is of paramount importance if one wishes to grow them successfully. They, in common with all other seeds, should be sown thinly and the soil pressed firmly over them when covered. Water frequently. A good plan is, sow the seeds in rows about 8 inches apart, then transplant to the permanent garden later.

All Prices on Flower Seeds are Postage Paid

Ageratum (H. A.) One of the very best bedding plants, being a mass of bloom from early summer till frost. Its flowers, unlike many bedding plants, are not liable to be spoiled by rain, nor do its colors fade out.
BLUE PERFECTION. Deep blue, 1 foot, ¼ Oz. 20c; Packet, 10c.
MIXED VARIETIES, ¼ Oz. 20c; Packet, 10c.

American Branching Asters of very strong growing Asters, blooming in late July and August in this latitude. The plants grow 24 to 30 in. high and are branching in habit.
WILT - RESISTANT. A type of very strong growing Asters, blooming in late July and August in this latitude. The plants grow 24 to 30 in. high and are branching in habit.
MIXED COLORS. Branching Asters. Packet, 10c; ¼ Oz. 30c; Oz. \$1.60.
AZURE BLUE. Packet, 15c; ¼ Oz. 35c; Oz. \$1.80.
PEERLESS PINK. Packet, 15c; ¼ Oz. 35c; Oz. \$1.80.
SCARLET. Packet, 15c; ¼ Oz. 40c; Oz. \$2.40.
WHITE. Packet, 15c; ¼ Oz. 40c; Oz. \$2.40.

Balsam (Lady Slipper) An easy growing annual of quick growth, very desirable for garden or pot culture. Set 15 inches apart in rich soil. Mixed. ¼ Oz. 25c; Packet, 10c.

Canterbury Bells (Campanula) Beautiful hardy biennials bearing a profusion of bell-shaped flowers of exquisite colors. Does best in a rich, light soil. Height, 2½ feet. Single, Mixed colors, Packet, 10c; ¼ Oz. 30c.

Carnation (A) Always in demand and not hard to grow. Have a delightful clove fragrance. The "Marguerite" variety will bloom in four months from time of sowing seed.

Marguerite

	¼ Oz.	Pkt.
Scarlet	\$.05	\$0.10
Rose	.50	.10
White	.50	.10
Yellow	.50	.10
Mixed	.40	.10

Centaurea Cyanus (Corn Flower or Bachelor's Button) This well-known variety is useful for cutting and for buttonieres and when used with Calliopsis, Marigolds, and other annuals, make a charming combination, of easy culture, usually reseeding itself and coming up each season.

	Oz.	¼ Oz.	Pkt.
DOUBLE BLUE.			
Fine for cutting	\$.60	\$0.20	\$0.10
DOUBLE MIXED.			
All colors	.50	.20	.10

Cypress Vine (A) Beautiful and popular. tender climber, delicate, fern-like foliage, numerous flowers. Mixed, Oz. 30c; Packet, 10c.

Antirrhinum (Snap Dragon) (P. A.) A well-known, beautiful, stately plant, giving a wealth of bloom in pleasing color; a great border flower.
Brilliant Rose Pkt. 10c ¼ Oz. 25c
Orange King Pkt. 10c ¼ Oz. 25c
Queen Victoria (Pure White) Pkt. 10c ¼ Oz. 25c
Mixed. All colors Pkt. 5c ¼ Oz. 25c

Candytuft (A) Candytuft is a very hardy plant, easily grown and flowers all summer. It is a universal favorite, and is used for beds, borders, pots, etc.

Giant Empress An improved variety, producing very long spikes of bloom resembling a white hyacinth.
White Oz. 50c; Pkt. 10c
Pink Oz. 25c; Pkt. 10c
Crimson Oz. 25c; Pkt. 10c
Lavender Oz. 25c; Pkt. 10c
Purple; Deep rich purple Oz. 25c. Pkt. 10c
Mixed Colors; A mixture of the pink, purple, crimson and white varieties Oz. 25c; Pkt. 10c

Alyssum (Mad Wort) (A) & (P) An ever popular border flower, requires least care of all flowers; will bloom in six weeks from planting of seed. For edges of beds or rockeries its color effect is fine.

LITTLE GEM. Very dwarf habit, 4 inches high, very erect; Oz. 50c; ¼ Oz. 20c; Packet, 10c.
SAXATILE COMPACTUM (Perennial Yellow Alyssum.) ¼ Oz. 30c; Packet, 10c.

Calendula (Pot Marigold) (A) A most popular annual, very showy, grows in any kind of soil. Makes a fine effect in mixed beds or borders, a good potting flower.

Orange Shaggy 1935 A. A. S. Gold Medal. Exquisitely different, lacinated petalled type, exceedingly graceful and especially desirable for the garden. This is a really beautiful orange color, fascinating form and the most unique Caledula yet produced. Packet, 25c; ¼ Oz. 60.

Lemon Queen Sunflower yellow, unique, largest size. Florists' favorite yellow. Packet, 10c; Oz. 25c.

Meteor Creamy white, petals edged orange; picotee effect. Packet, 10c; Oz. 25c.
Mixed All Calendula colors.. Pkt. 10c; Oz. 25c.

Cardinal Climber (A) One of the best annual climbers introduced in many years. Rapid grower, with branching habit; flowers all summer in fiery cardinal-red clusters. 25 feet. Packet, 15c.

CELOSIA OR COCKSCOMB

The plants have colored foliage and form a brilliantly colored mass with the odd and striking flowers and seed vessels for beds and borders.

Celosia Cristata This is the common variety of "Cockscomb," so popular throughout the South for the fiery red and rich yellow velvety heads. Dwarf. Mixed. Packet, 10c; ¼ Oz. 50c; Oz. \$1.60.

Calliopsis (A) Very hardy and showy annual, with bright yellow and reddish-brown single daisy-like flowers, easily grown and useful both for garden decoration and cutting. Mixed; Yellow and brown, and velvety brown; Oz. 20c; packet 10c.

Cosmos (A) One of our most satisfactory hardy annuals, flowering in late summer. Fine for cutting and easily grown. Can be sown anywhere and transplanted.
Double Mixed. All colors. 4 feet. Oz. 50c; Pkt. 15c
Single Mixed Colors Oz. 30c; Pkt. 10c

Centaureas Hardy flowering annuals, which include some of our most graceful and showy garden flowers. especially for cutting. The tall, slender, straight or slightly branching plants with narrow leaves produce bright colored flowers on long, graceful stems and some are fragrant. Easily grown in any garden soil.

Bachelor's Button Cornflower — Ragged Robin — Centaurea Cyanus. 3 ft. tall. Known under all these names, this very easily grown flower is always included in old-fashioned gardens and usually reseeds itself every year. It blooms all summer long and should be in every Southern garden. Selected Double Flowering. All Colors, Mixed. Packet, 10c; Oz. 25c.

Dusty Miller White Leaved Centaurea Gymnocarpa. Silvery white or light gray leaves, 1 foot high, used for bedding, borders, baskets, pots and vases. Very effective. Packet, 10c; Oz. 30c.

Sweet Sultan Centaurea Imperialis. 3½ ft. tall. This superb new strain is splendid. Produces long-stemmed blossoms 2½ in. across and very fragrant. Colors from white through shades of pink, red, blue, lilac and royal purple. Best planted very early in season to allow for fine cut-flowers before hot weather. Mixed. Packet 10c; ½ Oz. 25c; Oz. 45c.

Yellow Sweet Sultan Odorata suaveolens. 2 ft. tall. Rich buttery yellow, lacinated tubular petals with many hairy stamens and pistils in center, resembling Sweet Sultan except shorter plants and 1¼ in. flowers. Popular for lasting cut flowers. Packet, 10c; ½ Oz. 35c; Oz. 60c.

Dianthus—Garden Pinks Hardy annual Garden Pinks are extremely popular all over the South for bedding, borders and cut-flowers. Stems, about 1 ft. tall, flowers often 2 in. across and leaves are narrow bright green. Cover seed ¼ in. and firm soil. When 2 in. high, thin to 6 in. apart. **SUPERB DIANTHUS MIXTURE.** A magnificent mixture, of all the best varieties, double and single; unusually large and brilliant flowers in the greatest variety of color. Packet, 10c; ¼ Oz. 25c; ½ Oz. 40c.

Digitalis—Foxglove Hardy Reseeding Biennial. Stately, picturesque beauty, called Thimble Flower. White, yellow, rose and purple flowers, gloriously spotted. Strong, upright flower stalks with very showy blooms in May and June, 3 to 5 ft. high. Give light, rich soil in partial shade when transplanting or naturalize along stream or in edge of woods. Very easily grown. Packet, 10c; ½ Oz. 25c; Oz. 45c.

Delphinium (P) (Hardy Larkspur) Great improvement has been made in the form and colors of these splendid border perennials, and their vigor of growth has been increased. They are of easy culture, thriving in any good open, yet substantial soil; when well established they are of great value in mixed or shrubby borders, and for cutting purposes.

	¼ Oz.	Pkt.
Belladonna. Turquoise blue\$0.60	\$0.15
Bellamosum. Rich, deep blue60	.15
Cardinale. Brilliant scarlet75	.15
Selected Hybrids. Mixed30	.10

Geum 12 to 24 in. tall. Popular, very pretty erect herb for border, rockery or pot plants. Mixed Colors. Packet, 10c.

Gaillardia (Blanket Flower) For beds or for cutting. Hardy annual. 2 feet. Mixed colors. Packet, 10c; ½ Oz. 30c; Oz. 50c.

Dazzler Intense maroon red and yellow. Packet, 15c; ¼ Oz. 40c; Oz. \$1.20.

Gypsophila Graceful, free-flowering plant, excellent for cutting and mixing in bouquets

BABY'S BREATH. White. Packet, 5c; ½ Oz. 15c; Oz. 25c.

Larkspur For bedding, for growing among shrubbery and as cut flowers, larkspurs are strikingly beautiful. Early spring plantings will give blooms from July till frost. All double flowers.

NEW GIANT IMPERIAL TYPE. 4 ft. tall.

BLUE SPIRE. Florists' ideal deep Oxford blue. Packet, 10c; ¼ Oz. 35c; Oz. \$1.00.

LOS ANGELES IMPROVED. Brilliant rose on salmon. Tall, upright grower. Packet 10c; ¼ Oz. 35c; Oz. \$1.00.

PEACH BLOSSOM. Light Pink. Packet, 10c; ¼ Oz. 35c; Oz. \$1.00.

GLORIA. Deep rose. Packet, 10c; ¼ Oz. 35c; Oz. \$1.00.

WHITE SPIRE. Clear white, now the fashion. Packet, 10c; ¼ Oz. 35c; Oz. \$1.00.

GIANT IMPERIAL MIXED. All Larkspur colors well balanced in this finest base branching, uniformly long stemmed type. Packet, 10c; ¼ Oz. 25c; Oz. 80c.

Tall Double Stock Flowering Larkspur

AZURE BLUE. Clear Blue. Packet, 10c; ½ Oz. 25c; Oz. 45c.

DARK BLUE OR PURPLE. Packet, 10c; ½ Oz. 25c; Oz. 45c.

LAFRANCE. A pleasing shade of salmon pink. Packet, 10c; ½ Oz. 40c; Oz. 75c.

LILAC IMPROVED. Packet, 10c; ½ Oz. 30c; Oz. 55c.

LOS ANGELES. Brilliant rose or salmon. Packet, 10c; ½ Oz. 40c; Oz. 75c.

MIXED. Packet, 10c; ½ Oz. 20c; Oz. 35c.

TALL HYACINTH FLOWERED.
Pink. Packet, 10c; ½ Oz. 45c; Oz. 85c.
Lilac. Packet, 10c; ½ Oz. 45c; Oz. 85c.
White. Packet, 10c; ½ Oz. 45c; Oz. 85c.

Larkspur, Rosamond 1934 A. A. S. Gold Medal.

Tall branching type, uniform in height, 4 ft.; heavy spikes of fully double flowers. New, distinct, bright rose color which doesn't fade. 2 weeks earlier for good cutting before others are available. Finest garden Larkspur yet. Packet, 25c; ¼ Oz. 60c; Oz. \$2.00.

Columbine Easily grown, old-fashioned perennials for borders.

SINGLE MIXED. Packet, 10c.
DOUBLE MIXED. Packet, 10c.

ROCKY MOUNTAIN BLUE. Packet, 10c.

Cobaea Scandens (Cup and Saucer Vine). A climber of rapid growth; large, bell-shaped flower. Packet, 5c; ½ Oz. 35c; Oz. 60c.

African Daisy (Dimorphotheca.) Beautiful and showy annual about 12 inches high and bears in great profusion daisy-shaped, rich, glossy gold flowers. 2½ inches across, with dark centers surrounded by a black zone. Splendidly adapted for beds and borders. Packet, 10c; ¼ Oz. 35c.

Shasta Daisy (Alaska). Hardy perennials, bearing flowers 4 inches across. Blooms for months and more freely each season; flowers remain fresh for two weeks after cutting. Packet, 10c; ¼ Oz. 35c.

Euphorbia Strong growing annuals for mixed borders or beds of tall plants. The flowers are unnoticeable but the foliage is exceedingly ornamental. Very popular, easily grown most anywhere in sunny places.

Annual Poinsettia Euphorbia heterophylla. Also called Mexican Fire Plant. 18-24 in. tall, compact, base-branching, erect, bushy, odd terminal crowns of leaves of fiery orange-scarlet, like small Poinsettias. Very decorative. Packet, 10c; ¼ Oz. 25c; Oz. 80c.

Snow on the Mountain Euphorbia variegata. Also called Mountain Spurge. 2-3 ft. tall, a remarkably distinct decorative plant, all leaves of light green, margined with white. Chiefly used as a showy border plant. Packet, 10c; ¼ Oz. 25c; Oz. 45c.

MOONFLOWER

Evening Glory Rapid growing climbers with luxuriant foliage; the blooms, 4 to 6 inches in diameter, open in the evening and on cloudy days. Grows 30 feet or more. Soak for a day to hasten germination.

Grandiflora Bears hundreds of pure white fragrant flowers 5 to 6 inches in diameter. Packet, 10c; ½ Oz. 25c; Oz. 45c.

Heavenly Blue About 15 feet high, with exquisite azure blue flowers that shade to white at the center. Packet, 10c; ½ Oz. 50c.

MAYO'S SUPERB NASTURTIUMS

No annual will produce such a lavish profusion of blooms for so long a time, such variety of color as nasturtiums. They begin blooming early and yield a continuous display of brilliant color till frost. They bloom best in poor soil. Hardy annual.

Double Golden Gleam 1933 A. A. S. Gold Medal. The outstanding novelty of a decade. Sweet Scented, semi-double, richest clear deep yellow. Vigorous bush, profusely flowering in blaze of color. Large 2½ in. flowers on erect, 6 in. stems, held above foliage. Few 12-18 in. flowering runners. Packet, 10c; Oz. 25c; ¼ Lb. 50c; Lb. \$1.50; 5 Lbs. \$6.00.

Nasturtium, Scarlet Gleam 1935 A. A. S. Gold Medal. Glorious scarlet, double, sweet scented mate for Golden Gleam. Semi-bush type, ruffled, semi-double flowers in profusion. Packet, about 15 seeds, 25c; ¼ Oz. 70c; Oz. \$2.50.

Nasturtium, Glorious Gleam Hybrids 1935 A. A. S. Award of Merit. Colorful mixture of triple - cross Gleam hybrids by the originator of these Double Nasturtiums, John C. Bodger, our grower in El Monte, Cal. Sensation around the world, glorious colors everywhere. Packet, 25c; ¼ Oz. 50c; Oz. \$1.50.

Bush or Dwarf—Mixed Flowers large, gorgeous and brilliant. All shades and colors of dwarf growing varieties. There is no better mixture than this. Packet, 5c; Oz. 10c; ¼ Lb. 30c; Lb. 95c; 5 Lbs. \$3.50.

Tall Mixed All shades and colors of tall or climbing varieties; only large, single flowering varieties. You will find this the best balanced mixture in colors. Packet, 5c; Oz. 10c; ¼ Lb. 30c; Lb. 95c; 5 Lbs. \$3.50.

PHLOX

Nothing can surpass these beautiful annuals in the magnificent display of their many and brilliantly colored flowers. Sown in the open ground in the early spring or fall, they come into flower in June, and are literally covered with bloom till frost.

Phlox Cuspidata (Star Phlox) A novel variety of dwarf habit, producing star shaped flowers. Mixed Colors. Packet, 10c; ¼ Oz. 35c; Oz. 90c.

Drummond's Mixed All colors. Packet, 10c; ¼ Oz. 25c; Oz. 75c.

Hardy Perennial Phlox Decussata. Difficult to grow from seed, which may stay in soil a year before growing. Mixed colors. Packet, 15c; ¼ Oz. 45c; Oz. \$1.40.

Salvia SCARLET SAGE — BONFIRE. Free flowering bedding plant of brilliant scarlet all summer. Packet, 10c; ¼ Oz. 40c.

Scabiosa Mourning Bride or Pincushion Flower. The long-stemmed double blooms make a fine cut flower, but they are equally fine for beds and borders, blooming till frost; fragrant; richly colored. Height, 2 feet.

ANNUAL MIXED COLORS. Packet, 10c; Oz. 35c.

PERENNIAL BLUE. Packet, 15c; ¼ Oz. 50c.

SWEET WILLIAM

If sown early will bloom the following fall; fall sowings bloom the next summer. Height 1½ feet.

Double Mixed Double flowers, bright colors. Packet, 10c; ½ Oz. 25c; Oz. 40c.

GIANT SPENCER SWEET PEAS

CULTURE. Sow in January, February, March or April. Cover seed 2 to 4 inches, according to depth of your trench. The soil for Sweet Peas should be rich and deep, with Fulverized Sheep Manure in it. On high and dry soils they may be sown in drills from 4 to 6 inches deep, covered with an inch or two of soil pressed firmly, and the furrow filled in as the plants grow. When the plants are well above the ground, they should be thinned out so as to be at least from 2 to 4 inches apart.

AMBITION, (Lilac Lavender).

ASCOT, (Bright Pink).

BARBARA, (Soft Salmon).

BLANCHE FERRY, (Bright Rose, wings white flushed pink).

BLUE FLAME, (Deep Blue).

CAMPFIRE, (Vivid Scarlet).

CHARITY, (Rich Crimson).

COLORADO, (Bright Orange).

DAFFODIL, (Deep Cream).

EDNA MAY IMPROVED, (Pure White).

Postpaid prices on any of the above; Packet, 10c; Oz. 20c; ¼ Lb. 60c; Lb. \$1.90.

Superb Spencer Mixture The Spencers are the finest type of sweet peas in cultivation. Our mixture is a well balanced blend of colors from the purest white to the deepest maroon, one that will please the most exacting lover of sweet peas. It will give a lavish display in an almost endless range of color. Packet, 10c; Oz. 15c; ¼ Lb. 50c; Lb. \$1.50.

STOCKS

Useful annuals for bedding, borders, cut flowers and pot culture.

LARGE FLOWERING TEN WEEKS. A fine large-flowering strain of many colors. Packet, 10c; ¼ Oz. 40c; ¼ Oz. 70c.

SUNFLOWER

Plant the tall kinds for centers of beds and backgrounds; the dwarf for cut flowers and general decoration. Plant in April. Hardy annual.

DOUBLE CHRYSANTHEMUM FLOWERED. The most beautiful of all double sunflowers; golden yellow with long fringed petals. Packet, 5c; ½ Oz. 20c.

MAMMOTH RUSSIAN. Packet, 5c; Oz. 15c.

Thunbergia A climber, 3 to 5 feet high, with pale yellow or orange-yellow flowers, having a distinct black center. Tender annual. Packet, 10c; ½ Oz. 40c; Oz. 75c.

Wallflower Very conspicuous in beds or borders. Single mixed. Packet, 5c; ½ Oz. 30c; Oz. 50c.

LUPIN

Commonly called Texas Blue Bonnet. Very pretty blue flowers. Packet, 10c; Oz. 25c.

MARIGOLD

Hardy annuals, in bloom till frost comes.

Tagetes Signata Pumila. 6 in. high, 18 in. spread. 1 in. single golden yellow scented flowers blanketing plants. Packet, 10c; ¼ Oz. 30c; Oz. 90c.

All-Double Lemon French. Packet, 15c; ¼ Oz. 50c; Oz. \$1.60.

All-Double Orange French. Packet, 15c; ¼ Oz. 50c; Oz. \$1.60.

Guinea Gold Gold Medal 1933. All-American Selection. 2 ft. or taller, pyramidal growth, 30 to 40 semi-double, golden orange flowers. 2 to 2½ in. across. Practically 100% double. Distinct from other marigolds, they are more like carnations with their long, loosely placed wavy petals. No familiar marigold odor. Packet, 10c; ¼ Oz. 35c; Oz. \$1.00.

Marigold, Yellow Supreme 1935 A. A. S. Gold Medal. Beautiful new type, Carnation-flowered; rich primrose yellow, 100% double, odorless; 2-3 ft. tall, free-flowering, a little larger than Guinea Gold flowers but a beautiful creamy yellow to go with it. For garden and cutting. Packet, 25c; ¼ Oz. 75c; Oz. \$2.75.

MAYO'S PANSIES

For the earliest blooms from spring plantings, plant in boxes indoors and when an inch high transplant to where they will get the morning sun. Late summer and fall plantings bloom early the following spring. Moisten the beds after planting, cover with unbleached muslin or newspaper to conserve the moisture, for drying out is fatal. Pansies will stand the severest winters without protection. Grow them in a shady place in rich moist soil.

Giant Trimardeau Mixture Remarkably large blooms, generally marked with large blotches; the colors are rich and varied. Packet, 10c; ¼ Oz. 35c.

MIXED. Packet, 10c; ¼ Oz. 25c.

PETUNIA

No annual will give a greater profusion of bloom with so little care than petunias. Plant in a sunny position and they will bloom till frost. Grow them in pots, beds, borders and porch boxes. For early flowers sow in boxes and transplant when weather is warm; later sow outside in a sunny place. Half hardy annual.

Balcony Blue Fine, rich, large, pendulous. Wonderful window box variety. Packet, 25c; ⅓ Oz. 85c; Oz. \$6.00.

Balcony White No finer white. Like Balcony Blue in extra large size and grandest display. Packet, 15c; ⅓ Oz. 60c; Oz. \$4.00.

Rosy Morn Dwarf; pink with white throat. Most popular of all. Small flowers. Packet, 15c; ⅓ Oz. 50c; Oz. \$3.00.

Single Fringed A strain of incomparable beauty and luxuriance. Flowers most varied in colors and markings, beautifully ruffled, fringed and of enormous size. Packet, 25c.

Howard's Star Distinct star-shaped. Mixed. Packet, 10c; ¼ Oz. 75c.

Choice Single, Mixed A splendid strain of small-flowering sorts in great variety of colors. Packet, 10c; ¼ Oz. 30c.

POPPIES

Hardy annuals and perennials of quick growth and easy culture, yielding a wealth of gorgeous blooms. For beds and borders nothing is better. Plant annual varieties where they are to bloom, perennial sorts may be transplanted. Barely cover the seeds and press the soil firmly. Plant early in the spring, at intervals during the summer and in the fall for a succession. Cut the flowers regularly to insure a long blooming season.

Oriental Perennial Of great popularity. Immense red, salmon and pink shades, 6 in. across. One of the most showy garden perennials and in great demand. Packet, 10c; ⅓ Oz. 25c; Oz. \$1.25.

Shirley Mixed Very large single flowers in the newest, very finest strain. Packet, 10c; Oz. 25c.

Tulip Intense scarlet, with black blotch at base of petals; single Shirley tulip or cup-shaped flowers 2 inches across. Packet, 10c; ½ Oz. 25c; Oz. 45c.

Carnation Flowered Mixed Double, large fringed flowers in a great range of colors; white, red, pink, violet and yellow shades. Packet, 10c; Oz. 25c.

Hunnemania GIANT YELLOW TULIP POPPY. Santa Barbara Poppy, Bush Eschscholtzia. SINGLE. Packet, 10c; ½ Oz. 35c; Oz. 60c.

California Poppy All colors mixed. Packet, 5c; ½ Oz. 20c; Oz. 30c.

Peony Flowered Mixed Same as Carnation type except petals are not fringed. All colors. Packet, 10c; Oz. 25c.

Special Mixed Single Poppies Contains only select varieties that will give a dazzling display of colors. Packet, 10c; Oz. 25c.

MIGNONETTE

Reseda Odorata 12 in. Sweet scented, delightfully fragrant. One of its principal uses is for cutting and combining with more showy flowers in bouquets to give a delightful fragrance. Dense cone-shaped flower spikes of white, yellow and red shades. Packet, 10c; Oz. 20c.

Linum Grandiflorum Rubrum (Scarlet Flax). A very pretty, hardy annual bedding plant, two feet high, covered with bright red flowers. Packet 10c; ½ Oz. 20c.

Perennial Blue A hardy perennial; bears graceful bright blue flowers from June till frost. Height, 18 inches. Packet, 10c; ¼ Oz. 25c.

JAPANESE MORNING GLORIES

Grand climbers, the flowers measuring 4 to 6 inches across in limitless variety of colors. The foliage is ornamental—some mottled and checkered; some rich, vivid green, others silvery white, others yellow. Soak 24 hours before planting.

Single Imperial Japanese The original variety. The wonderful colorings of both flowers and foliage are beyond description. Packet, 10c; Oz. 30c.

Nigella LOVE-IN-A-MIST, or DEVIL-IN-A-BUSH. Handsome flowers, requiring but little care. Flowers bright and showy. Hardy annual. Height, 1 foot. Mixed colors. Packet, 10c; ½ Oz. 30c.

GIANT ZINNIAS

(YOUTH AND OLD AGE)

Few garden annuals are more thoroughly satisfactory than zinnias, particularly since in recent years greatly improved larger flowering and more brilliantly colored strains have been developed. For bedding, for borders and for cut flowers, they furnish a wealth of blooms from early summer till late in the fall. Plant early in rows 1½ to 2 feet apart and cover the seeds about ¼ inch deep; Hardy annual.

DAHLIA FLOWERED ZINNIAS



MAMMOTH DOUBLE ZINNIAS

California Giants

ORANGE. An exceedingly large variety, splendid coloring. Price 10c per packet, ½ Oz. 70c; Oz. \$1.10.

BRIGHT ROSE. A delightful shade of rose, very large. Price 10c per packet; ½ Oz. 70c; Oz. \$1.10.

WHITE. A very large white flowered variety. Price 10c per packet; ½ Oz. 70c; Oz. \$1.10.

CRIMSON. Truly a most wonderful shade. Brilliant mammoth and showy. Price per packet, 10c; ½ Oz. 60c; Oz. \$1.05.

YELLOW. Very popular, pleasing color. Price, 10c per packet; ½ Oz. 60c; Oz. \$1.05.

LAVENDER. A most delightful flower. Price, 10c per packet; ½ Oz. 60c; Oz. \$1.05.

California Giants Mixed Perfect blend of all colors. Finest mixture, including above varieties and all other colors so far produced in this largest sized cut-flower type of Zinnias. Large Packet, 10c; ¼ Oz. 25c; Oz. 75c.

Fantasy Mixture 1935 A. A. S. Award of Merit. Introduced in 1935 under the name of Fantasy.

While the giant-flowered varieties are very popular, the trend is toward the smaller and more graceful types. Fantasy has rounded flowers, composed of a mass of shaggy ray-like petals, which give a delicate and refined appearance to the medium sized double flowers, large enough to satisfy the desire for mass of color, yet small enough to lend themselves gracefully to flower arrangement. The color range includes the brightest shades of reds and orange, as well as the pastel pinks and cream.

Fantasy is of the Curled and Crested type, distinctly different from any other Zinnias. Packet, 25c; ¼ Oz. 50c. Oz. \$3.00.

POMPON OR BABY ZINNIAS

These Baby or Miniature Zinnias, like the Pompon Dahlias and Button Chrysanthemums, are becoming quite the rage. Pompons are excellent for cutting, beds, lining borders and general garden use. They are suitable for tables, small vases, dishes and wherever a large flower is out-of-place. Pretty, compact, bushy growth and literally covered with small, densely double flowers in perfect taste, held well above foliage. Flowers resemble Pompon Dahlias in size, shape and colors, 2 feet tall.

CANARY YELLOW. Deep rich yellow and the clearest and best yellow for striking effect. Packet, 10c; ¼ Oz. 25c; Oz. 80c.

SALMON ROSE. Best of all colors, beautiful under artificial light too. Packet, 10c; ¼ Oz. 25c. Oz. 80c.

SCARLET GEM OR RED RIDING HOOD. Richest fiery scarlet, very showy. Packet, 10c; ¼ Oz. 25c; Oz. 80c.

WHITE GEM. Clear ivory white. The newest fashion now is white flowers. This is exactly right. Packet, 10c; ¼ Oz. 25c; Oz. 80c.

POMPON MIXED. All Zinnia colors in these delightful little beauties, blended by formula for a perfect color mixture. Plant at least ¼ Oz. of these for cutting. Packet, 10c; ½ Oz. 35c; Oz. 60c.

Crimson Monarch Red. Largest and best red. Very vigorous, flowers often 8 in. Packet, 10c; ¼ Oz. 25c; Oz. \$1.20.

Dream Deep Lavender. Turns mallow purple, new exquisite Zinnia color. Packet 10c; ¼ Oz. 25c; Oz. \$1.20.

Exquisite Rose Pink. Finest of all Zinnias. Light rose with Tyrian rose center. Packet, 10c; ¼ Oz. 25c; Oz. \$1.20.

Golden Dawn Bright Old Gold. Immense sized golden yellow of fine form. Packet, 10c; ¼ Oz. 25c; Oz. \$1.20.

Oriole An immense orange and gold bicolor. A beautiful variety. Packet, 10c; ¼ Oz. 25c; Oz. \$1.20.

Giant Attraction A distinct shade of brick red which carries the color well from the bud and forms into an immense ball of color when in full bloom. Packet, 10c. ¼ Oz. 25c; Oz. \$1.20.

Dahlia Flowered Mixed All colors. Well blended mixture containing all Zinnia colors of the Dahlia Flowered type, including the above special varieties and many other color shades. Packet, 10c; ¼ Oz. 25c; Oz. 75c.

There are various other kinds of Zinnias that we do not list, if you wish other kinds or colors, please write us for full information about them. Special prices in quantity lots.

BULBS FOR SPRING PLANTING

CANNAS

Gorgeous and effective bedding plants. They grow well in any soil, but respond quickly to liberal treatment. In groups or as backgrounds for smaller plants they present a brilliant and continuous display till frost.

The President Superior to Fiery Cross. Glowing Scarlet. 4 feet. Green stocky foliage; extra large trusses on strong shafts well above foliage. Compact heads of gigantic bloom. Color is flame red or glowing scarlet and the huge petals look like silk crepe; the great trusses are beautiful. The President is superior to any other red Canna. 2 Roots, 25c; 6 for 60c. 12 for \$1.00; 25 for \$1.75; 100 for \$5.00.

Eureka 4 feet. Without exception the finest white or cream colored canna. The flowers are large and freely borne; green leaved. 2 Roots, 30c; 6 for 75c; 12 for \$1.25; 25 for \$2.00; 100 for \$7.50.

City of Portland Very good growth Deep Rose. 3½ feet. and beautiful bloom. Green foliage; 8 to 10 medium large blooms open at a time. Color is a very beautiful light rose-pink throughout and a profuse bloomer. Similar to Mrs. A. F. Conard except clearer pink in color. Exceptional variety. 2 Roots, 30c; 6 for 75c; 12 for \$1.25; 100 for \$6.00.

Yellow King Humbert Lemon Stippled Red. 5 ft. Also Called Queen Helen. Probably the most interesting Canna. Stocky green foliage but often shows bronze variations; very large flower heads and 4 large wide open blooms at a time. Color is deep lemon yellow dotted red but shows red petals, half petals, sometimes whole heads of red flowers. Part red and part yellow blooms and both green and bronze foliage is often found on the same plant. 2 Roots, 25c; 6 for 60c; 12 for \$1.00; 25 for \$1.75; 100 for \$5.00.

Hungaria The new pink Canna with green foliage, a beautiful shade of rose-pink. 4 feet. 3 Roots, 25c; 6 for 45c; 12 for 75c; 25 for \$1.35. 100 for \$4.50.

Wyoming Salmon. 5 ft. Very strong growth and excellent bloom. Large trusses, 3 to 4 large wide-open blooms, with all petals extra large, open at a time. Color is a very deep salmon or blood orange with faint red penciling in throat. Very heavy, large bronze leaves; a wonderful tall bedder. 3 Roots, 25c; 6 for 45c; 12 for 75c; 25 for \$1.35; 100 for \$4.50.

King Humbert Fiery Red. 5 ft. Most popular and satisfactory Canna. Excellent growth and bloom. Heavy deep purple-madder brown over bronze foliage with very large, somewhat heart-shaped leaves. Large compact flower heads with large ruffled or orchid blooms. Color is fiery red or orange-scarlet. 2 for 25c; 6 for 60c; 12 for \$1.00; 25 for \$1.75; 100 for \$5.00.

Special Offer, Mixed Cannas

A large assortment of colors. 2 for 20c; 6 for 40c; 12 for 70c; 100 for \$4.20, Postpaid.

GLADIOLUS

For a succession plant at intervals from April till June. Plant 6 inches apart and 4 inches deep.

Golden Measure Golden Yellow. The most magnificent yellow Gladiolus. Gigantic spike with enormous, wide open flowers. Midseason. 6 for 30c; 12 for 55c; 25 for \$1.00; 100 for \$3.50.

Los Angeles Rich Cream-pink. Beautiful rich but delicate coloring. Produces several side spikes. Midseason. 6 for 25c; 12 for 45c; 100 for \$2.75.

Betty Nuthall Light Coral. Glory of the whole garden. Exquisite new coloring, a warm light coral with pale orange throat and rouge feathering. Extra large new show winner of splendid substance and placement. 3 for 20c; 6 for 35c; 12 for 60c; 25 for \$1.10; 100 for \$4.00.

Minuet Orchid. Just like a Cattleya Orchid. The exquisite beauty by which all others are judged. Cream throat blotch dusted purple. Large, heavily textured blooms on straight spikes. Finest lavender in existence and winner at all shows. 3 for 25c; 6 for 45c; 12 for 75c; 100 for \$4.75.

Mrs. Francis King Brilliant pink Blazed with vermilion; extra large wide-open flowers well arranged on strong spikes; a fine cut flower. Midseason. 6 for 25c; 12 for 45c; 25 for 80c; 100 for \$2.75.

Halley Salmon Pink. Tall; excellent cutter; compact 4-inch wide open blooms. Salmon pink, shaded purple and red on yellow. Earliest flowering. This is the variety for early high price blooms. 6 for 25c; 12 for 45c; 25 for 80c; 100 for \$2.75.

Joerg's White Pure White. Generally considered the world's best white. Slow propagator, so demand for this immense flowered show winner on great spikes is always greater than the supply. 3 for 25c; 6 for 45c; 12 for 75c; 100 for \$4.75.

Carmen Sylva Snow White. Almost self-colored, throat slightly penciled lilac. Stem tall, slender, wiry, straight. Excellent cutter. Grand variety and an exceptional white. 6 for 35c; 12 for 60c. 25 for \$1.10; 100 for \$4.00.

Mixed Gladiolus A well-balanced mixture of all colors from pure white to dark red; first size bulbs. By mail, postpaid, 6 for 25c; dozen 45c; 50 for \$1.60; \$2.75 per 100.

Special Gladiolus Offer

One each of the eight varieties listed above. This will make a wonderful color combination. Price 45c, Postpaid.

Should you be interested in a large assortment of any bulbs, we will be pleased to go into the matter with you and help work out your plan. We can also name special prices on large orders.

MAYO'S DAHLIAS

New and Recent Introductions

The Commodore Bloom 10x4, Bush 5 ft. A nice clean-growing, bright lemon yellow. Won American Home Achievement Medal and A. D. S. Certificate. Petals large, centers full with flowers of loose and open formation. Bush is compact. Stems are of good length when disbudded. \$1.50 per Tuber.

Dwight W. Morrow A new, outstanding Dahlia of immense size. A brilliant rich crimson red of royal appearance. Very productive and a strong grower. Perfect stems. Does not fade and is an excellent keeper. Winner at all shows the country over. \$1.25 per Tuber.

Jean Trimbee Bloom 10x5, Bush 5 ft. Massive yet artistic with long, revolute petals that curl and twist. The color is a beautiful petunia violet making it popular as an exhibition dahlia. A tall, vigorous grower with long, erect stems. \$1.00 per Tuber.

Dr. John Carman Bloom 11x5, Bush 5 ft. A dahlia you will admire, as it is large and attractive, but not coarse. Color, Tyrian rose, shaded silver. Greatly improved if grown in partial shade, as this softens the coloring. A dahlia of exceptional growing and blooming qualities suitable for landscape work, and a good keeper when cut. \$1.00 per Tuber.

Kemp's Violet Wonder (Informal Decorative). The predominating color is a rich Naphthaline-Violet with underlying tone of royal purple, lightening to bluish violet at tips of petals with deep lavender reverse. The strong, vigorous growing plants produce blooms of massive size on fine strong stems. 75c. per Tuber.

Buckeye Bride (Informal Decorative). A truly great pink Dahlia. It is of Geranium-pink, a rare and beautiful shade. The flower is large, is always held at a correct angle on the stem, and the stems are always long and perfect. It keeps well when cut. The heavy foliage successfully resists sucking insects and mildew. The vigor is high and uniform. \$1.00 per Tuber.

Graf Zeppelin Bloom 8x4, Bush 8 ft. This dahlia will stand out as a sentinel in your garden as it is the strongest and tallest growing dahlia we offer. The large white flowers are regular in formation with centers full. Stems are very long and erect. 75c per Tuber.

OLDER AND STANDARD VARIETIES

	Per Tuber
JANE COWL, Bronze Buff ...	\$.25
SANHICIAN QUEEN, Apricot25
SANHICIAN BEAUTY, Rose25
DOROTHY STONE, Rich Pink35
JERSEY'S BEAUTY, Decorative Pink25
JERSEY'S BEACON, Oriental Red25
CITY OF TRENTON, Tangerine50
SNOWDRIFT, White35
LEMONODE, Clear Yellow50
HEART OF GOLD, Pink and Yellow25
MRS. I. DE VER WARNER, Lavender15
PRIDE OF CALIFORNIA, Deep Red15

4

DAHLIA COLLECTION OF THE OLDER AND STANDARD VARIETIES

Your selection, one Tuber each of any variety, 6 for \$1.25; 12 for \$2.30.

Pompon Dahlias

	Per Tuber
BELL OF SPRINGFIELD, The Best Red25
BOBBY, Delicate Plum Shade25
DARKNESS, Maroon25
JOE FETTE, Best White35
JOHNNY, Bright Red25
SUNSET, Orange35
S. VAN GLITTER, Autumn Leaves25

DAHLIA COLLECTION

One Tuber each of the above Pompon varieties for \$1.50.

VERBENAS

Verbenas are usually treated as an annual. They make colorful beds and edging. Sow in early spring in boxes or in open ground after danger of frost is past. Transplant when 3 or 4 leaves are formed or thin out to 2 ft. apart each way in a sunny location with good soil. Plants grow rapidly to a foot high and spread to 2 ft. across the top. About a dozen single flowers form in each cluster or truss, colors and shades ranging from white to deep purple and red.

- MAMMOTH DARK BLUE. Packet, 10c; 1/2 Oz. 75c.
- MAMMOTH CRIMSON. Packet, 10c; 1/2 Oz. 75c.
- MAMMOTH WHITE. Packet, 15c; 1/2 Oz. 75c.
- CHOICE MIXED. Embraces all colors. Packet, 5c; 1/2 Oz. 50c; Oz. 80c.

Forget-Me-Not Six inches. Graceful flowers, mostly in shades of blue. Mixed. Packet, 10c; 1/2 Oz. 30c; Oz. 50c.

Four O'Clock Hardy annual. 2 feet high. Mixed. Packet, 5c; 1/2 Oz. 10c; Oz. 20c.

Heliotrope Will bloom as easily from seed as any of the common annuals. Mixed. Packet, 5c.

SPECIAL OFFER

On packet garden and flower seeds. For 25c, six 5c packets. For 25c, three 10c packets. For 50c, thirteen 5c packets. For 50c, seven 10c packets. Make your selection. We pay the postage.

Hyacinth or Jack Bean A rapid-growing annual climber; mixed; all colors. Packet, 5c; 1/2 Oz. 10c; Oz. 15c.

Hollyhocks Sow in April, May or June for next year's blooming. DOUBLE MIXED. The finest double Chater varieties. All colors. Packet, 10c; 1/4 Oz. 40c. FINEST CHATER'S SINGLE. All colors. Packet, 10c; 1/4 Oz. 35c.

Kochia or Mexican Fire Bush Grows quickly from seed sown. Resembles balls of fire. Makes a good summer hedge. Packet, 5c; Oz. 35c.

Kudzu Vine A rapid growing hardy climber of great merit. Packet, 5c; 1/4 Lb. 50c.

Lantana Popular, free-blooming plants. Start seeds in the house or hotbed. Tender perennial. Height, 1 1/2 feet. Finest hybrids mixed. Packet, 10c; 1/2 Oz. 25c; Oz. 45c.

EVERBLOOMING ROSES

All two-year field grown hardy plants, No. 1 Grade.

Bush Varieties

American Beauty, Red
Columbia, Pink
Etoile de France, Red
Frau Karl Druschki, White
Francis Scott Key, Crimson
J. J. L. Mock, Pink
K. A. Victoria, White
Killarney, Pink
Killarney, White
Lady Hillingdon, Yellow
La France, Fragrant pink
Los Angeles, Coral

Bush Varieties

Mrs. Chas. Bell, Pink
Paul Neyron, Pink
Ophelia, Salmon
Radiance, Pink
Red Radiance, Red
Sunburst, Orange

Climbers

Cl. American Beauty, Red
Cl. Paul's Scarlet, Red
Cl. Silver Moon, White
Cl. Dr. W. Van Fleet, Flesh
Cl. Crimson Rambler

By mail, each, 45c; 3 for \$1.25; 6 for \$2.10; 12 for \$3.90

NEW ROSES

2-year field grown, No. 1 grade.

Bush Varieties

Betty Uprichard, Salmon
Dame Edith Helen, Pink
Lady Margaret Stewart, Orange
Margaret McGredy, Oriental red
Miss Rowena Thom, Rose-pink
Mrs. E. P. Thom, Lemon-yellow

Pres. Herbert Hoover, Yellow, veined pink.
Rev. F. Page-Roberts, Yellow, veined pink
Sensation, Bright crimson
Souv. de Claudius Pernet, Yellow
Talisman, Golden red-pink

By mail, each 50c; 3 for \$1.30; 6 for \$2.25; 12 for \$4.20.

There are several newer varieties of roses which may now be obtained. If we do not list the rose you want, please write us for a more complete list or give us the name of the rose and we will try to get it for you.

Garden Club Flower Shears

New. Snips and holds the flower at one operation. Holds stem and saves hands. **SPECIALLY PRICED, 45c PAIR; by mail, 55c POSTPAID.**

SHADE TREES

LOMBARDY POPLARS. During recent years this fine type of tree is quite generally used by trained landscape gardeners. Old trees which have been well placed are outstanding landmarks today. Prices for shipment by express only, for 6 to 8 foot trees, 5 for \$1.40; 10 for \$2.70.

SILVER MAPLES. A hardy, rapid growing, beautiful native tree of large size. Very valuable for producing a quick shade. 6 to 8 feet. Price for shipment by express or freight. (These are too tall to ship by parcel post). 30c each; 5 for \$1.40; 10 for \$2.70. Write for quantity prices.

MAYO'S PEACH TREES

18 to 24 INCHES TALL

We are listing 6 splendid varieties in the order in which they mature fruit.

MAYFLOWER. (1st maturity). Bright red cheeked. Carries to market in fine shape and sells well, as it is the best colored of all early peaches. Inclined to overbear and should always be thinned.

EARLY ROSE. (2nd Maturity). Red Cling Stone. Wonderful flavor. Medium size. Best flavored early peach.

CARMAN. (3rd maturity). Large, resembles Elberta in shape. Color is creamy white almost yellow with deep blush. Skin very tough, flesh tender, fine flavor and quite juicy.

HILEY. (4th in maturity). A splendid large peach. Red with blush cheek.

ELBERTA. (5th maturity). Large yellow with red cheek; flesh yellow, firm, juicy, of high quality. Very prolific, sure bearer and hardy. The leading market variety.

HEATH KLING. (6th maturity). Extra large white cling stone. Excellent flavor, fine for pickles and preserves.

Prices on Peach Trees listed above. Postpaid, 21c each, 6 for 98c; 12 for \$1.89. Write for quantity prices

MAYO'S PLUM TREES

18 to 24 INCHES TALL

ABUNDANCE. One of the oldest and best varieties; hardy, productive. Fruit large, lemon yellow with heavy bloom, good quality. August.

BURBANK. Most profitable among growers for market; ripens 10 days after Abundance. Tree hardy, sprawling, vigorous grower, unequalled in productiveness; bears young. Large fruit excellent quality, cherry red with lilac bloom. August.

RED JUNE. One of the vigorous upright growers; productive; fair size vermilion red; pleasant quality. Ripens a week before Abundance. August.

DAMSON. Medium, dark purple, very showy, often measures 2 inches. One of the best for preserving. October.

JAPANESE GOLDEN. A very large yellow plum, very juicy but solid flesh. Very fine flavor and the best of all yellow plums.

Prices on any of the above Plums. Postpaid 25c each; 5 for \$1.00. Write for quantity prices.

MAYO'S CHERRY TREES3 to 4 Feet Tall
SOUR VARIETIES

EARLY RICHMOND. A dependable variety which seldom misses a crop. Medium, dark, red, melting, juicy, sprightly rich acid best. Late June.

MONTMORENCY. Large red, productive, ten days later than the Early Richmond. July.

ENGLISH MORELLO. Fair size blackish red, rich acid best. Late June.

MAY DUKE. Large, red, juicy, rich. June. Not so sour as some varieties, and very pleasant for sensitive teeth.

DYEHOUSE. A sure bearer, largely planted for early market; ripening a week before Early Richmond which it closely resembles.

Prices on all Cherry Trees. Postpaid, 35c each; 5 for \$1.50. Write for quantity prices.

Magnesium Arsenate For Bean Beetle and other Leaf-eating Insects. For spraying, use 1 pound to 50 gallons of water; for dusting, use 1 pound to 5 pounds air-slacked lime or fine road dust. **Postpaid, 1 Lb. 55c; 2 Lbs. \$1.00.** Write for prepaid prices on larger quantities.

Calcium Arsenate (Arsenate of Lime). For Mexican bean beetle, and all other leaf-eating insects. May be applied dry, mixing 1 part calcium arsenate to 7 parts hydrated (air-slacked) lime or land plaster; or in water 2 lbs. to 50 gallons of water. **Postpaid, 1 Lb. 30c; 4 Lbs. 55c.** Write for not prepaid prices on larger quantities.

Atlacide CHLORATE WEED KILLER. 300 times the weed-killing strength of salt. Exterminates weeds in walks, driveways, tennis courts, etc., safely and permanently. Deadly to vegetation, but harmless to humans, animals and birds, so can be used with absolute safety. If inserted into the crown of the plant it kills dandelions on lawns. It is odorless and colorless and will not stain or injure marble, cement or clothing. After a thorough application, we have not found it necessary to apply again for two years, and very few weeds appeared the third year. One pound to a gallon of water kills poison ivy. **By mail postpaid, 1 Lb. (treats 100 square feet) 35c; 3½ Lb. pkg. \$1.10.** Not postpaid, 1 Lb. 25c; 3½ Lb. pkg. 70c. Write for quantity prices.

Pyrox With Nicotine FOR VEGETABLES. A powerful fungicide and insecticide that controls fungous diseases and insects, stimulates and protects the leaves, helps the plant to grow strong and healthy. Just mix Pyrox with water and spray. Easy to use, stays on for weeks. **POISON. Postpaid, 10 Oz. 60c; 40 Oz. \$1.90.**

Ever Green Spray For Chewing and Sucking Insects and Ants. For bean beetle, cabbage worms, cucumber and squash beetles, potato bug, cutworms, green fly, white fly, mealy bug, mites, plant lice, leaf hopper, rose bugs and chafers, aster beetle and currant worm. Not poisonous. For general spraying (1 part of 800) an ounce makes 6 gallons; ½ pint makes 50 gallons. **Postpaid Prices, 1 Oz. (makes 6 gals. of Aphis spray), 35c; 6 Oz. Bottle, \$1.00; 16 Oz. Bottle (makes 100 gallons), \$2.00.** 1 Gallon Can, \$12.00. Bulk Prices and Dealer's Prices on Request.

Ant Kill Postpaid, 1 Set Complete 90c; Extra Syrup, Bottle, 35c.

Fish Oil Soap (Sometimes called Whale Oil Soap). Effectually destroys the mealy bug and almost all lice on both indoor and outdoor plants. Very effective against scale and soft-bodied sucking insects. It penetrates the crevices where the eggs and larvae are hidden and destroys them. **By mail postpaid, Lb. 35c; 5 Lbs. \$1.35.** Not postpaid, Lb. 25c; 5 Lbs. \$1.10.

INOCULATION

INOCULATION PRICE LIST SOIL INOCULATION—DRY FORM

For small seeds, such as Alfalfa, Sweet Clover, Red Clover, Mammoth Clover, Alsike, etc.

½ Bushel Size, Postpaid\$.35
1 Bushel Size, Postpaid50

2½ Bushel Size, Postpaid 1.00
For Soya Beans, Cow Peas, Vetch, Field Peas, Field Beans and Lespedeza.

1 Bushel Size, Postpaid\$.35
2 Bushel Size, Postpaid50
5 Bushel Size, Postpaid 1.00

Garden Size for Sweet Peas, Garden Peas, Garden Beans and Lima Beans, \$0.25, postpaid.

BEEKEEPERS' SUPPLIES

LEWIS BEEWARE—Standard of the Beekeeping World

The best authorities on bees say that it is necessary to have beekeeping equipment accurate in every detail for the best results with bees. Accordingly, we decided to stock Lewis "BEEWARE."

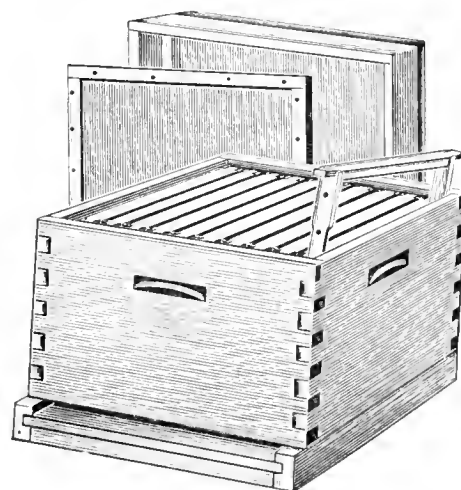
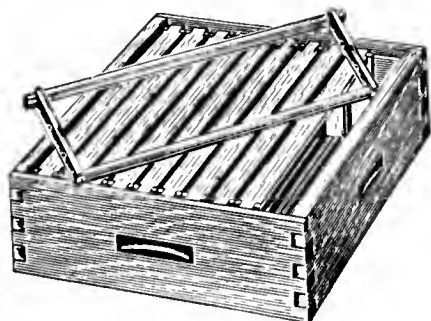
Every article made by Lewis is absolutely guaranteed to be satisfactory in every respect. You shall be the sole judge of worth. If any article purchased does not satisfy you upon receipt, return it at once and we will refund your purchase money and any transportation paid.

DADANT'S COMB FOUNDATION

WIRED MEDIUM BROOD, 10 Sheets, 90c; 50 Sheets \$4.30.

UNWIRED MEDIUM BROOD, 10 Sheets 75c; 50 Sheets \$3.60.

THIN SURPLUS FOUNDATION, 1 Lb. 70c; 5 Lbs. \$3.25.



10 Frame Hive

WITH METAL COVER

1 Hive K. D., \$ 3.35 Wt. 32 lbs.
5 Hives K. D., 15.15 Wt. 151 lbs.

WITH WOOD COVER

1 Hive K. D., \$ 3.00 Wt. 26 lbs.
5 Hives K. D., 13.00 Wt. 131 lbs.
8-frame sizes also furnished.

HOFFMAN HIVE AND SUPER FRAMES

10 Hoffman Frames\$.66 Wt. 6 lbs.
100 Hoffman Frames 5.50 Wt. 46 lbs.
10 5-¾ Shallow Frs.60 Wt. 4 lbs.
100 5-¾ Shallow Frs. 4.40 Wt. 27 lbs.

10-Frame 5-¾" Extracting Super Wedged Top Bar.
1 Super K. D. \$1.20 Wt. 10 lbs.
5 Supers K. D. 5.25 Wt. 40 lbs.
10-Frame Super for 4¼x1½ Sections.
1 Super K. D. \$1.05 Wt. 10 lbs.
5 Supers K. D. 4.65 Wt. 41 lbs.

PLANT FOODS OR FERTILIZERS

All prices f. o. b. Knoxville and subject to change without notice.

Transportation Charges Collect

ADCO. For Making Manure of Leaves. 100 Lbs. \$7.75; 25 Lbs. \$2.00.

ALUMINUM SULPHATE. To Make Acid Soil. 100 Lbs. \$5.00; 25 Lbs. \$1.50; 3 Lbs. 25c.

BONE MEAL RAW. For Bulbs and Shrubs. 100 Lbs. \$2.90; 50 Lbs. \$1.50; 25 Lbs. 90c.

BONE MEAL STEAMED. For Bulbs and Shrubs. 100 Lbs. \$2.90; 50 Lbs. \$1.50; 25 Lbs. 90c.

COTTON SEED MEAL. Vegetable Nitrogen. 100 Lbs. \$2.25; 50 Lbs. \$1.20; 25 Lbs. 65c.

LIME. Hydrated Agricultural, Sweetens Soil. 100 Lbs. \$1.00; 50 Lbs. 50c.

NITRATE OF SODA. For Quick Growth. 100 Lbs. \$2.75; 25 Lbs. 90c; 4 Lbs. 25c.

MURIATE OF POTASH. For Color, Substance, Strength and Hardiness. 100 Lbs. \$3.50; 25 Lbs. \$1.00; 4 Lbs. 25c.

PHOSPHORIC ACID. Builds Sturdy Plants. 125 Lbs. \$1.55.

SHEEP MANURE. 100 Lbs. \$2.75; 50 Lbs. \$1.50; 25 Lbs. 90c.

SULPHATE OF AMMONIA. For quick acting nitrogen. 100 Lbs. \$3.50; 25 Lbs. \$1.00; 5 Lbs. 40c.

TOBACCO STEM MEAL. Also an insecticide. 100 Lbs. \$2.50.

VIGORO. Complete Balanced Plant Food. 100 Lbs. \$4.00; 50 Lbs. \$2.50; 25 Lbs. \$1.50; 10 Lbs. 85c; 5 Lbs. 50c.

PEAT MOSS

Peat Moss will prepare any soil for garden purposes and will improve the growing conditions. It is especially adapted to give body to loose, sandy soil, thereby providing a soil reservoir in which all moisture entering the soil is held, dissolving fertilizer into available plant food, and holding it over long periods of time for the constant use of plant roots.

PRICES: ½ Bale (9 bu.), \$2.00; 1 Bale (19 bu.), \$4.00; 5 Bales @ \$3.50; 10 Bales @ \$3.25. F. O. B. Knoxville by Freight or Express Only, Charges Collect.

INSECTICIDES AND FUNGICIDES

Can now be sent by parcels post according to a ruling of the postal dept. dated April 16, 1934.

Arsenate of Lead Stomach poison against Moths, Worms, Caterpillars, Curculio, Bugs and Beetles, all leaf-eating insects. Poison, Postpaid, Lb. 40c; 4 Lbs. \$1.05; Not Prepaid, 8 Lbs. \$1.55; 24 Lbs. \$4.25.

Paris Green For Leaf-eating Insects. It is a strong poison and should be used with care. Mix one pound of paris green to 50 pounds of plaster, or with water to 150 gallons. On vines and tender vegetables use a larger proportion of plaster and water. Postpaid, ¼ Lb. 22c; 1 Lb. 55c. Write for not prepaid prices on larger quantities.

Bordeaux Mixture Much used to cure and prevent mildew, blight, black rot, leaf curl or other fungoid diseases on fruits and plants. Postpaid, Lb. 38c; 4 Lbs. \$1.30. Write for quantity prices not prepaid.

Dusting Sulphur ROSES. A general use fungicide for mildew and "black spot." Dust every two weeks as preventive. Postpaid, 3 Lbs. 40c; 10 Lbs. \$1.00. Write for quantity prices not prepaid.

Tobacco Dust For Aphids and Flea Beetles, in soil and around roots. Postpaid, 2 Lbs. 35c; 10 Lbs. \$1.50. Write for quantity prices not prepaid.

Red Arrow For Chewing and Sucking Insects. A non-poisonous pyrethrum spray that is highly recommended for killing practically all insects on vegetable and flower plants and fruit trees. Recommended for Mexican bean beetle, Japanese beetle, striped cucumber beetle, cabbage and tomato worms, squash and potato bugs and aster and dahlia beetles. An ounce makes 6 gallons of spray (a teaspoonful to a gallon of water); ½ pint makes 50 gallons. Postpaid, Oz. 40c; ¼ Pt. \$1.10; ½ Pt. \$1.90; Qt. \$6.20. Write for not prepaid prices.



FRIEND

of Growers and Poultry People!

40% Nicotine. The world's leading contact insecticide and poultry delouser. Always dependable. "A little goes a long way."

Kills Aphis, Thrips, Leaf Hoppers and



other insects on garden, farm and orchard crops by contact and fumes—an advantage not possessed by non-volatile, non-poisonous spray materials.

Also Kills Poultry Lice . . .

Merely paint tops of perches with "Black Leaf 40." Body heat from roosting birds creates fumes which penetrate feathers and kill lice and feather mites.

Postpaid, Oz. 40c; 5 Ozs. \$1.10, 1 Lb. \$2.35, 2 Lbs. \$3.40.

BARIUM FLUOSILICATE. For controlling the Mexican bean beetle and other leaf eating insects. Use 1 tablespoonful to a gallon of water, 1 pound to 50 gallons. Postpaid, 1 Lb. 50c; 2 Lbs. 95c; Write for quantity prices.

LESPEDEZA SERICEA -- New Perennial Lespedeza

is wholly a new type of Lespedeza, having an enormous root system that not only enriches the soil, but lives throughout the winter and starts the new crop from the old stubble in the spring, and multiplies rapidly when mowed or grazed off. Two cuttings of hay and a seed crop may be obtained each year, as high as four tons of dry hay in one season, the equal of alfalfa in feeding value. The plant is extremely leafy.

SERICEA will grow apparently anywhere in the United States on almost any type of soil without liming or any kind of treatment.

For largest yield of seed, sow in three foot rows about three pounds of scarified seed per acre, cultivate to keep weeds down. Seed bed should be very firm and seed covered very lightly, then rolled for best results. Yield 300 to 400 pounds seed to the acre.

MAYO'S LAWN GRASS SEED

Mayo's Lawn Grass Seed is a product of many years study in making an ideal lawn grass for our locality. In our immediate territory, we have some of the finest lawns in the country. Many of these were made by using Mayo's lawn grass only. This mixture has been changed from time to time as we found other grasses that added value to the mixture.

The basis of this mixture is blue grass, which is a slow grower, it usually takes it two or three years to form a good sod, so with this is blended some quick growing grasses that make a green lawn the first season and yet do not retard the growth of the blue grass which is forming a permanent sod. This mixture will form a permanent sod in a remarkable short time. Our lawn grass has been giving satisfaction for many years. Use about 1 pound of this seed for every 250 square feet of new lawn. Postpaid, Lb. 45c; 5 Lbs. \$1.95. Special prices on quantity lots. Write for prices.

MAYO' SHADY LAWN GRASS SEED

As a rule there are some trees in the yard and the shade of these causes new lawn problems. We have worked out a good mixture of grass seeds that grow fine in the shade. A shady place requires a different mixture of seeds and it also requires more feeding. It takes a lot of plant food to replace what the trees take out, be sure to use more fertilizer in the shady places. Use about the same amount of grass seed as listed above. Postpaid Prices, Lb. 50c; 5 Lbs. \$2.20. Special prices in large lots. Write for quotations.

Kentucky Blue Grass The ideal lawn grass seed. Ideal for golf fairways and putting greens, one of the best pasture grasses. Slow grower the first year but will do better the second. Deep green. Plants slightly creeping. For many years we have made a specialty of furnishing GOOD blue grass seed for lawns and other purposes. Use 1 pound to every 250 square feet for lawns and 40 pounds to the acre for pasture. Postpaid, 1 Lb. 45c; 5 Lbs. \$1.95. Prices much lower not postpaid. See general list or write for prices.

Tennessee German Millet Millet is a wonderful hay crop, it is a quick grower and the feeding value of the hay is very high. This year, it is especially important that you know the source of your millet seed, much seed is being imported and the value of this in our territory is somewhat questionable. Insist on Tennessee Grown Millet. See general price list for quotations.

Inoculate Be sure to inoculate all clovers and the kindred plants on this page with Dickinson's Humus culture. You are sure to make a catch of that particular crop and at the same time you get a larger yield.

Korean Lespedeza The earliest of the annual Lespedezas comes up early in the spring and grows rapidly, furnishing much earlier pasture than any other variety. The leaves are larger than common Lespedeza, and more rounded. Begins flowering in July, the flowers crowding near the ends of the branches, as distinguished from other varieties, which have flowers scattered along the stems. Korean is especially suited for a short growing season. The seed ripens in September.

Kobe Lespedeza A new and improved type of Lespedeza which grows much ranker and has larger leaves and slightly coarser stems. It has been known to grow 38 inches tall, but usually about 2 to 2½ feet. Possibly due to its rank growth, completely shading the ground and thus retaining moisture, it is much more resistant to dry weather and comes through a drought when common Lespedeza burns up. An excellent variety for pasture and hay and a great improvement over the common Lespedeza.

Tennessee Station No. 76 Lespedeza This variety is similar to the common or wild variety, except that it is taller and more upright in growth, holding all the branches off the ground, even when the plants stand alone. It is finer stemmed than Korean or Kobe, and grows to the height of nearly three feet under favorable conditions. It blooms slightly later than Kobe and considerably later than Korean or common. The hay yields made on the West Tennessee Experiment Farms are larger than those of the other varieties.

Common Lespedeza or Japan Clover Grows practically anywhere. Sow 1 bushel per acre in February, March, April, broadcast on good seed bed. Makes splendid pasture and fine hay.

ALFALFA

Alfalfa is one of the few crops that cannot be over-produced. It stands for years, yields several cuttings a season and makes a hay about as high in protein as wheat bran; it more nearly approaches perfection as a forage crop than any one other crop. When fed with a grain ration, it supplies the protein necessary for a balanced food. For dairy, breeding and fattening cattle, hogs and sheep, it is the ideal hay. Various grades of Alfalfa may be obtained but the purest seed you can get will be the least expensive. See general list for prices.

COW PEAS

Whippoorwill The standard early bush variety for broadcasting after small grain or in corn row middles.

Clay Peas Medium late, running habit, vigorous vine growth. Pods ripen uniformly, leaves stay on well in curing; good forage.

Brabham Upright growth, retains foliage well in curing, vigorous, productive. Fine for light soils.

Mixed Cowpeas Real advantage for soil improvement, growing off better and thicker; fine for hay and forage.

D. R. MAYO SEED CO., Inc.

KNOXVILLE, TENNESSEE

Dear Sir:—

February 4, 1935

We are pleased to quote you our today's prices on seasonable farm seeds as follows f. o. b. Knoxville. These prices are subject to prior sale, market changes and our confirmation. In the event you wait some time before ordering please be sure and write us for new prices. Prices on Farm seeds change often. Cotton bags for Grass and Clover Seeds are 40c each extra. We make no charge for burlap bags in which other articles are sacked. MAYO'S SELECT GRADES (M. S.) are our best grades of seeds. OUR EXPORT and CHOICE grades are lower grades at lower prices.

"We give no warranty, express or implied, as to description, quality, productiveness, or any other matter of any seeds, plants or bulbs we send out, and we will not be in any way responsible for the crop. D. R. MAYO SEED CO., Inc."

CLOVER SEEDS

M. S. Red Clover, Bu.	\$15.50	Korean Lespedeza, Bu., Tenn. Standard.....	\$ 1.75
Export Red Clover, Bu.	14.50	Tennessee No. 76 Lespedeza, Bu.	3.00
Choice Red Clover, Bu.	12.00	Kobe Lespedeza, Bu., Dodder Free	2.75
M. S. Sapling Clover, Bu.	15.50	Kobe Lespedeza, Bu., Tenn. Standard	2.50
Yellow Blossom Sweet Clover, Bu.	7.00	Sericea Lespedeza, lb.20
White Blossom Sweet Clover, Bu.	6.50	M. S. White Dutch, lb.40
M. S. Alsike, Bu.	14.00	M. S. Alfalfa, Bu.	14.00
Export Alsike, Bu.	11.00	Export Alfalfa, Bu.	12.50
Japanese Clover (Common Lespedeza), Bu....	3.00	Choice Alfalfa, Bu.	11.00
Korean Lespedeza, Bu., Dodder Free	2.00		

GRASS SEEDS

M. S. Red Top, 100-lbs.	\$15.00	Bermuda Grass, lb.	\$.35
Export Red Top, 100-lbs.	14.00	M. S. Timothy, Bu.	10.00
Choice Red Top, 100-lbs.	12.50	Export Timothy, Bu.	9.00
M. S. Orchard Grass, Bu.	2.50	M. S. Ky. Blue Grass, Bu.	3.90
Export Orchard Grass, Bu.	2.25	Export Ky. Blue Grass, Bu.	3.75
Choice Orchard Grass, Bu.	1.95	Rye Grass, lb.10
Tall Meadow Oat Grass, Bu.	1.90	Mayo's Select Lawn Grass, lb.35

FORAGE CROPS AND GRAINS

Whippoorwill Peas, Bu.	\$2.25	Mam. Yellow Soya Beans, Bu.	\$2.25
Clay Peas, Bu.	2.25	Tokyo Soya Beans, Bu.	2.25
Mixed Peas, Bu.	2.15	Southern Laredo Soya Beans, Bu.	3.50
German Millet, Bu.	3.50	Indiana Laredo	3.25
Winter Turf Oats, Bu.	1.00	Orange Cane Seed, Bu.	2.00
Red Rust Proof Oats, Bu.95	Ribbon Cane Seed, Bu.	2.00
Burt Oats, Bu.95	Dwarf Essex Rape, lb.10
Fulgrum Oats, Bu.95	Sudan Grass, lb.12
White Oats, Bu.90		

MAYO'S SEED CORN

Mayo's Hickory King, Bu.	\$1.90	Jarvis Golden Prolific, Bu.	\$1.85
Tenn. Red Cob, Bu.	1.90	Mayo's Yellow Dent, Bu.	1.95
Neals Paymaster, Bu.	1.90	Hasting's Prolific, Bu.	2.10

YELLOW DANVER ONION SETS

1 Gallon	\$.60	1 Bushel	\$4.50
1 Peck	1.15	1 Bag (2 bu.)	8.75

IRISH POTATOES

(Maine Grown)		(Western Grown)	
Irish Cobblers, 150-lb. Bag.	\$3.35	Burbanks, 150-lb. Bag	WRITE
Spaulding Rose, 150-lb. Bag	3.25	Peerless, 150-lb. Bag	FOR
Red Bliss Triumphs, 150-lb. Bag	3.25	Cobblers, 150-lb. Bag	PRICES
Green Mountains, 150-lb. Bag	3.00		

We also have many other items we do not list here, write us for any of your seed needs.

Yours very truly,

D. R. MAYO SEED CO., Inc.

REDAY REFERENCE TABLE

Field Seeds -- When to Plant -- How Much to Plant

ONE ACRE OF LAND CONTAINS APROXIMATELY 210X210 FEET OR 43500 SQUARE FEET

VARIETY	When to Plant	Quantity for an Acre	Distance Apart in the Row	Depth to Plant
Alfalfa.....	April to June—Sept.....	25 to 30 lbs..	Broadcast....	¾ to 1 in.
Barley.....	Feb. to Apr.—Sept., Oct....	1½ bu.....	Broadcast....	2 in.
Broom Corn.....	Feb., Mar.—Sept., Oct....	6 to 8 lbs....	8 to 10 ins....	1 in.
Buckwheat.....	Feb. to Apr.—Sept., Oct....	1 bu.....	Broadcast....	1 in.
Clover, Alsike.....	Feb. to Apr.—Sept., Oct....	6 to 8 lbs....	Broadcast....	¾ to 1 in.
Clover, Crimson.....	Feb. to Apr.—Sept., Oct....	15 to 18 lbs..	Broadcast....	½ in.
Clover, Sweet.....	Sept., Oct., Nov.....	15 to 25 lbs..	Broadcast....	¼ in.
Clover, Mammoth Sapling.....	Feb., Mar., April.....	8 to 10 lbs....	Broadcast....	½ in.
Clover, Red.....	March, April, May.....	8 to 10 lbs....	Broadcast....	½ in.
Clover, White Dutch.....	March, April, May.....	4 to 6 lbs....	Broadcast....	¼ in.
Cow Peas, in Drills.....	April to August.....	½ to 1 bu.....	2 to 3 ins....	2 ins.
Cow Peas, Broadcast.....	May, June, July.....	1½ to 2 bus..	Broadcast....	2 ins.
Corn, Field.....	Feb., Mar.—Sept., Oct....	4 to 6 qts....	18 to 24 ins..	2 ins.
Kaffir Corn.....	May, June.....	6 to 8 lbs....	4 to 6 in....	1½ to 2 ins.
Grass, Bermuda.....	May, June, July.....	10 to 12 lbs..	Broadcast....	¼ in.
Grass, Blue.....	Aug., Sept., Oct.....	60 to 75 lbs..	Broadcast....	½ in.
Grass, Lawn.....	Feb., Mar., Apr.—Aug. to O	60 to 75 lbs..	Broadcast....	½ in.
Grass, Orchard.....	Sept., Oct., Nov.....	20 to 24 lbs..	Broadcast....	½ in.
Grass, Red Top, Herds.....	Apr., May, June, July.....	8 to 10 lbs....	Broadcast....	½ in.
Grass, Pasture.....	Apr., May, June, July.....	30 lbs.....	Broadcast....	½ in.
Grass, Winter Rye.....	Apr., May, June, July.....	30-40 lbs....	Broadcast....	½ in.
Lespedeza, Japan Clover.....	Apr., May, June, July.....	1 bu.....	Broadcast....	¼ in.
Lespedeza Sericea.....	Apr., May, June, July.....	20 to 30 lbs..	Broadcast....	¼ in.
Lespedeza Sericea, Drill.....	Apr., May, June, July.....	3 to 4 lbs....	6 to 8 ins....	½ in.
Millet, Tenn. German.....	Apr., May to Aug.....	20-30 lbs....	Broadcast....	½ in.
Oats.....	May, June.....	2 to 2½ bus..	Broadcast....	1 to 2 ins.
Peanuts.....	March, April—Sept., Oct....	35 to 40 lbs..	10 to 12 ins..	2 ins.
Peas, Stock.....	Aug. to Nov.....	1½ to 2 bus..	Broadcast....	2 ins.
Peas, Austrian Winter.....	May, June.....	30 to 35 lbs..	Broadcast....	2 ins.
Rape, Essex.....	Sept., Oct., Nov.....	6 to 10 lbs....	4 to 6 ins....	½ in.
Rye, Common.....	Mar., Apr.—Sept., Oct....	1 to 1¼ bus..	Broadcast....	2 ins.
Rye, Abruzzi.....	Sept., Oct.....	¾ to 1 bu.....	Broadcast....	2 ins.
Sorghum, Drill.....	April, May, June.....	8 to 10 lbs....	4 to 5 ins....	1 in.
Sorghum, For Hay.....	May, June, July.....	50 to 75 lbs..	Broadcast....	1 in.
Soy Beans, Small Seed.....	Mar. to May—Sept.....	1 bu.....	Broadcast....	1 to 2 ins.
Soy Beans, Drill, Small Seed.....	Aug., Sept., Oct.....	1 pk.....	4 to 5 ins....	1 to 2 ins.
Soy Beans, Large Seed.....	Mar., Apr.—Sept., Oct....	1½ bus.....	Broadcast....	1½ to 3 ins.
Soy Beans, Drill, Large Seed.....	Mar., Apr.—Sept., Oct....	½ bu.....	4 to 6 ins....	1½ to 3 ins.
Sudan Grass.....	Mar., Apr.—Sept., Oct....	25 to 30 lbs..	Broadcast....	1 in.
Sunflower.....	Feb., Mar.—Sept., Oct....	6 to 8 lbs....	15 to 18 ins..	1 in.
Timothy.....	Apr., May, June, July.....	15 lbs.....	Broadcast....	¼ to ½ in.
Vetch, Winter Variety.....	Apr., May, June, July.....	20 to 25 lbs..	Broadcast....	2 ins.
Velvet Beans.....	April to August.....	¼ to ½ bu... 2	2 to 2½ ft..	3 to 4 ins.
Wheat.....	May, June, July.....	pk.....	Broadcast....	2 ins.

VEGETABLE PLANTING CALENDAR

Name of Vegetable	Seed for 50 feet of row	Lbs. Seed to sow an acre	Depth to plant	Time to Plant
Artichoke, Tubers.....	2 lbs.....	400 lbs.....	2 in.....	Feb. to Apr.
Asparagus Roots.....	25 rts.....	10,000 rts..	3 in.....	Feb. to Apr.
Beans, Bush Snap.....	½ lb.....	60 lbs.....	1 in.....	Mar. to Aug. 15th.
Beans, Pole and Lima.....	½ lb.....	30 lbs.....	1 in.....	Apr. to Aug. 1st.
Beets.....	2 oz.....	5-6 lbs.....	1 in.....	Feb. to Aug.
Brussel Sprouts.....	1 pkt.....	¼-½ lb.....	½ in.....	April.
Cabbage Seed.....	1 pkt.....	¼-½ lb.....	½ in.....	Jan. to Mar.
Cabbage Plants.....	50 pls.....	15,000 pls..	3 in.....	Feb., Apr., July & Aug.
Cantaloupe.....	1 pkt.....	1-2 lbs.....	1 in.....	May and June
Carrot.....	½ oz.....	4-6 lbs.....	½ in.....	Mar. to Aug.
Celery.....	1 pkt.....	⅛-¼ lb.....	3 in.....	Mar. to May.
Chard, Swiss.....	1 oz.....	8-10 lbs.....	1 in.....	Mar. to Aug.
Collard Seed.....	1 pkt.....	¼-½ lb.....	¼ in.....	Mar. to Aug.
Corn, Garden, Pop.....	1 pkt.....	14 lbs.....	1 in.....	Apr. to July.
Cress.....	1 pkt.....	2-3 lbs.....	½ in.....	Mar. to Sept.
Cucumbers.....	1 pkt.....	1-2 lbs.....	1 in.....	Apr. to June.
Eggplant Plants.....	24 pls.....	7,500 pls..	3 in.....	May, June.
Endive.....	½ oz.....	1-2 lbs.....	½ in.....	Apr. to June.
Gherkins.....	1 pkt.....	1-2 lbs.....	1 in.....	Apr. to June.
Gourds.....	1 pkt.....	1 in.....	1 in.....	Apr. to June.
Herbs.....	2 pkts.....	½ in.....	½ in.....	Apr. to May.
Kale or Borecole.....	2 pkts.....	3-4 lbs.....	½ in.....	Feb. to Oct.
Kohl Rabi.....	2 pkts.....	½ lb.....	½ in.....	Mar. and Apr.
Leek.....	½ oz.....	3-4 lbs.....	½ in.....	Mar., Apr., Sept.
Lettuce.....	1 pkt.....	1 lb.....	½ in.....	Feb., Mar. to Sept.
Mustard.....	1 pkt.....	2 lbs.....	½ in.....	Mar. to Oct.
Okra.....	1 oz.....	4 lbs.....	1 in.....	Apr., May.
Onion.....	1 pkt.....	3-4 lbs.....	½ in.....	Sept., Oct., Mar., Apr.
Onion Plants.....	100 pls.....	60,000 pls..	2 in.....	Feb. to Apr.
Onion Sets.....	1 lb.....	6 to 10 Bu..	1½ in.....	Sept. to April.
Parsley.....	2 pkts.....	3 lbs.....	½ in.....	Mar., Apr., and Aug.
Parsnips.....	2 pkts.....	5 lbs.....	1 in.....	Mar. and Apr.
Peas, Garden.....	1 lb.....	56-60 lbs..	1 in.....	Feb. to May
Pepper.....	1 pkt.....	¼-½ lb.....	½ in.....	Mar. to June.
Chinese Cabbage.....	1 pkt.....	¼-½ lb.....	½ in.....	Feb., Mar.
Potatoes, Irish, Tubers.....	7½ lbs.....	750 lbs.....	2 in.....	Feb., Apr., July, Aug.
Potatoes, Sweet, Plants.....	25 pls.....	10,000 pls..	3 in.....	Apr., May
Pumpkins.....	1 pkt.....	2-4 lbs.....	2 in.....	Apr., June.
Radish.....	½ oz.....	8-10 lbs.....	½ in.....	Feb. to Sept.
Rhubarb or Pie Plant.....	25 roots.....	4,200 rts..	tips out.....	Feb. to Apr.
Rutabaga.....	1 oz.....	2-4 lbs.....	½ in.....	Feb. to Aug.
Salsify.....	1 oz.....	6-8 lbs.....	½ in.....	Mar. to May.
Spinach.....	½ oz.....	15-20 lbs..	1 in.....	Feb., May., Sept., Oct.
Squash.....	½ oz.....	2-3 lbs.....	1 in.....	May and June.
Tomatoes.....	1 pkt.....	¼-½ lb.....	½ in.....	Feb. to June.
Tomato Plants.....	12 pls.....	4,000 pls..	3 in.....	May, June, Aug.
Turnips.....	1 oz.....	2-4 lbs.....	½ in.....	Feb., Sept.
Watermelon.....	1 oz.....	3 lbs.....	2 in.....	May and June.

It is our intention to offer a complete seed service to the growers. If we can be of any service to you at any time, please write us.

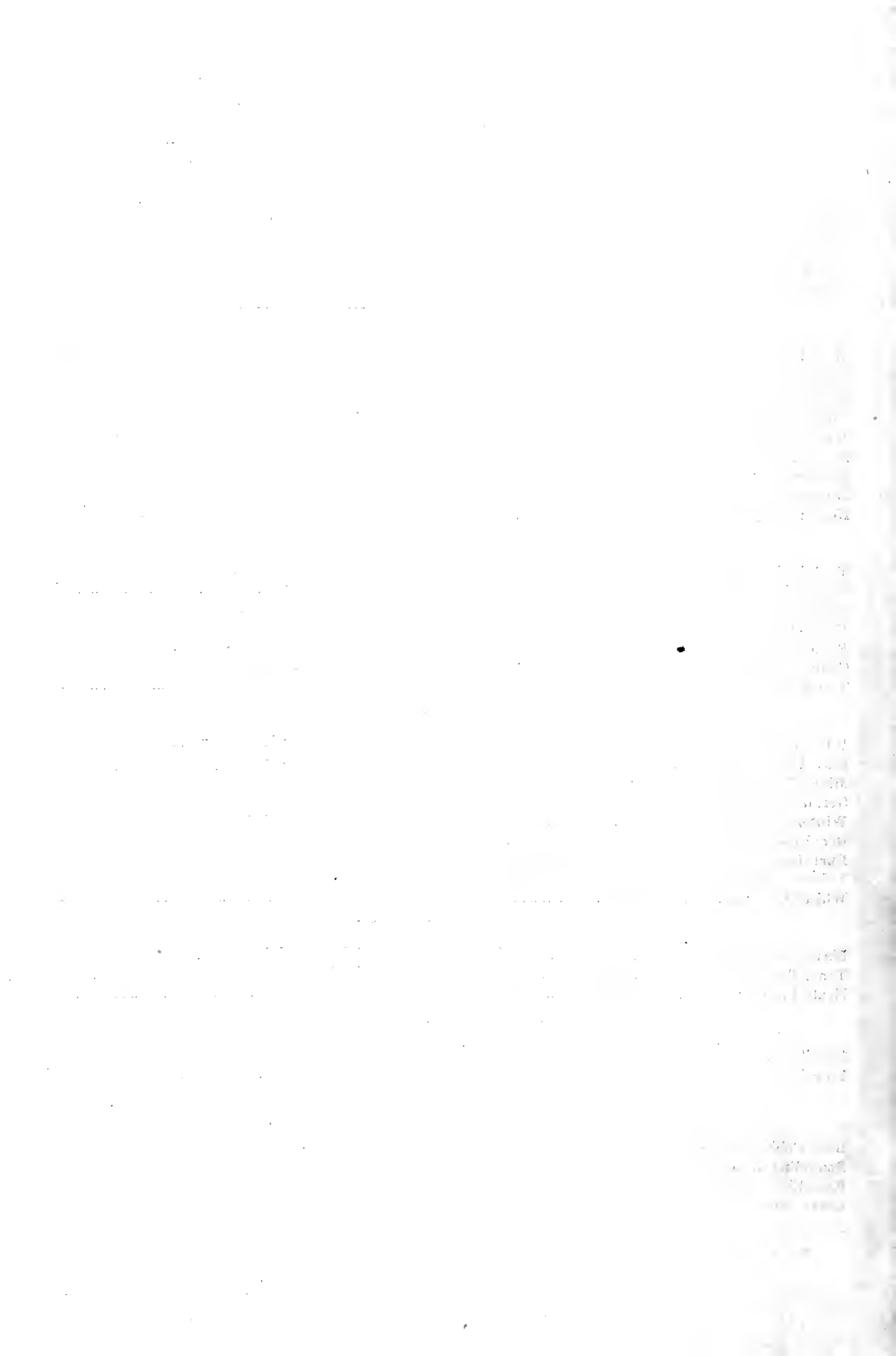
Field Seeds — — — Flower Seeds

GARDEN SEEDS

D. R. MAYO SEED CO., Inc.

419 Wall Avenue

Knoxville, Tennessee



Sudan Grass A Wonderfully Quick-Growing Summer Hay Grass. Yields two or more cuttings to season. It stools out wonderfully after the first cutting. Stock eat it up clean, blades, stalks and heads. A wonderful summer catch crop for hay. A sure hay crop in a dry season. Ready to cut in about 45 days after the first cutting.

Sow it after the ground becomes thoroughly warm, say after corn planting time. It may be sown either with a grain drill or in rows two feet apart, and cultivated like corn. When sown in rows it grows 6 to 7 feet high; when sown broadcast the hay is finer and rather better than when grown in rows. Cut when in bloom, for at that stage the feeding value is highest, yet there are few grasses so little injured by standing beyond the proper stage for cutting.

MISCELLANEOUS FIELD SEEDS

Red Clover	Sapling Clover
White Sweet Clover	Yellow Sweet Clover
Alsike Clover	White Dutch Clover
Red Top	Orchard Grass
Tall Meadow Oat Grass	Bermuda Grass
Timothy	Blue Grass
Rye Grass	Lawn Grass
Red Fesque	Sheep Fesque
Poa Trivialis	Tennessee Wilt Resistant Red Clover
Crimson Clover	Tennessee German Millet
Sudan Grass	Orange Cane
Ribbon Cane	Rape
Broom Corn	Mammoth Yellow Soya Beans
Tokio Soya Beans	Laredo Beans
Mung Beans	Virginia Brown Soya Beans
Whippoorwill Peas	Clay Peas
Brabham Peas	New Era Peas
Blackeye Peas	Mixed Peas
Jarvis Prolific Corn	Hastings Prolific Corn
Eureka Prolific Corn	Hickory King Corn
Reid's Yellow Dent Corn	Webb Watson Corn
Winter Turf Oats	Fulgrum Oats
White Oats	Burt Oats
Red Rust Proof Oats	Buckwheat

SUPPLIES FOR CANARY BIRDS

Bird Cages — Cage Stands — Bird Millet — Mixed Bird Feed — Hemp
Cuttle Bone — Bird Sand — Feed Cups — Tonics — Mite Powders
Miscellaneous Cage Supplies

PAINTS

Outside Paints — Inside Paints — Varnishes — Stains — Auto Enamel — Auto
Top Dressing — Shellac — Linseed Oil — Lacquers — Brushes
COMPLETE LINE OF PAINTS

FEEDS

Dog Foods — Dairy Feeds — Cotton Seed Meal
Various Other Feed Items

See enclosed Price List for Field Seed Prices. We carry many other items not listed here. Write us for any of your field or garden seed needs.

QUALITY SEEDS PROMPT DELIVERY FAIR PRICES

D. R. MAYO SEED CO., Inc.

419 Wall Avenue

Knoxville, Tennessee

HELPFUL HINTS TO THE GARDENER

THE PLANTERS TIME TABLE

In presenting this Vegetable Planting Calendar, it is our hope that it will be of some benefit to you. We offer seed, from selected growers, best suited to this part of the country.

VEGETABLE PLANTING CALENDAR

Name of Vegetable	Seed for 50 feet of row	Lbs. Seed to sow an acre	Depth to plant	Time to Plant
Artichoke, Tubers	2 lbs.	400 lbs.	2 in.	Feb. to Apr.
Asparagus Roots	25 rts.	10,000 rts.	3 in.	Feb. to Apr.
Beans, Bush Snap	$\frac{1}{2}$ lb.	60 lbs.	1 in.	Mar. to Aug. 15th.
Beans, Pole and Lima	$\frac{1}{2}$ lb.	30 lbs.	1 in.	Apr. to Aug. 1st.
Beets	2 oz.	5-6 lbs.	1 in.	Feb. to Aug.
Brussel Sprouts	1 pkt.	$\frac{1}{4}$ - $\frac{1}{2}$ lb.	$\frac{1}{2}$ in.	April.
Cabbage Seed	1 pkt.	$\frac{1}{4}$ - $\frac{1}{2}$ lb.	$\frac{1}{2}$ in.	Jan. to Mar.
Cabbage Plants	50 pls.	15,000 pls.	3 in.	Feb., Apr., July & Aug.
Cantaloupe	1 pkt.	1-2 lbs.	1 in.	May and June
Carrot	$\frac{1}{2}$ oz.	4-6 lbs.	$\frac{1}{2}$ in.	Mar. to Aug.
Celery	1 pkt.	$\frac{1}{8}$ - $\frac{1}{4}$ lb.	3 in.	Mar. to May.
Chard, Swiss	1 oz.	8-10 lbs.	1 in.	Mar. to Aug.
Collard Seed	1 pkt.	$\frac{1}{4}$ - $\frac{1}{2}$ lb.	$\frac{1}{4}$ in.	Mar. to Aug.
Corn, Garden, Pop	1 pkt.	14 lbs.	1 in.	Apr. to July.
Cress	1 pkt.	2-3 lbs.	$\frac{1}{2}$ in.	Mar. to Sept.
Cucumbers	1 pkt.	1-2 lbs.	1 in.	Apr. to June.
Eggplant Plants	24 pls.	7,500 pls.	3 in.	May, June.
Endive	$\frac{1}{2}$ oz.	1-2 lbs.	$\frac{1}{2}$ in.	Apr. to June.
Gherkins	1 pkt.	1-2 lbs.	1 in.	Apr. to June.
Gourds	1 pkt.		1 in.	Apr. to June.
Herbs	2 pkts.		$\frac{1}{2}$ in.	Apr. to May.
Kale or Borecole	2 pkts.	3-4 lbs.	$\frac{1}{2}$ in.	Feb. to Oct.
Kohl Rabi	2 pkts.	$\frac{1}{2}$ lb.	$\frac{1}{2}$ in.	Mar. and Apr.
Leek	$\frac{1}{2}$ oz.	3-4 lbs.	$\frac{1}{2}$ in.	Mar., Apr., Sept.
Lettuce	1 pkt.	1 lb.	$\frac{1}{2}$ in.	Feb., Mar. to Sept.
Mustard	1 pkt.	2 lbs.	$\frac{1}{2}$ in.	Mar. to Oct.
Okra	1 oz.	4 lbs.	1 in.	Apr., May.
Onion	1 pkt.	3-4 lbs.	$\frac{1}{2}$ in.	S.pt., Oct., Mar., Apr.
Onion Plants	100 pls.	60,000 pls.	2 in.	Feb. to Apr.
Onion Sets	1 lb.	6 to 10 Bu.	$1\frac{1}{2}$ in.	Sept. to April.
Parsley	2 pkts.	3 lbs.	$\frac{1}{2}$ in.	Mar., Apr., and Aug.
Parsnips	2 pkts.	5 lbs.	1 in.	Mar. and Apr.
Peas, Garden	1 lb.	56-60 lbs.	1 in.	Feb. to May
Pepper	1 pkt.	$\frac{1}{4}$ - $\frac{1}{2}$ lb.	$\frac{1}{2}$ in.	Mar. to June.
Chinese Cabbage	1 pkt.	$\frac{1}{4}$ - $\frac{1}{2}$ lb.	$\frac{1}{2}$ in.	Feb., Mar.
Potatoes, Irish, Tubers	$7\frac{1}{2}$ lbs.	750 lbs.	2 in.	Feb., Apr., July, Aug.
Potatoes, Sweet, Plants	25 pls.	10,000 pls.	3 in.	Apr., May
Pumpkins	1 pkt.	2-4 lbs.	2 in.	Apr., June.
Radish	$\frac{1}{2}$ oz.	8-10 lbs.	$\frac{1}{2}$ in.	Feb. to Sept.
Rhubarb or Pie Plant	25 roots	4,200 rts.	tips out	Feb. to Apr.
Rutabaga	1 oz.	2-4 lbs.	$\frac{1}{2}$ in.	Feb. to Aug.
Salsify	1 oz.	6-8 lbs.	$\frac{1}{2}$ in.	Mar. to May.
Spinach	$\frac{1}{2}$ oz.	15-20 lbs.	1 in.	Feb., May., Sept., Oct.
Squash	$\frac{1}{2}$ oz.	2-3 lbs.	1 in.	May and June.
Tomatoes	1 pkt.	$\frac{1}{4}$ - $\frac{1}{2}$ lb.	$\frac{1}{2}$ in.	Feb. to June.
Tomato Plants	12 pls.	4,000 pls.	3 in.	May, June, Aug.
Turnips	1 oz.	2-4 lbs.	$\frac{1}{2}$ in.	Feb., Sept.
Watermelon	1 oz.	3 lbs.	2 in.	May and June.

It is our intention to offer a complete seed service to the growers. If we can be of any service to you at any time, please write us.

Field Seeds — — — Flower Seeds

GARDEN SEEDS

D. R. MAYO SEED CO., Inc.

419 Wall Avenue

Knoxville, Tennessee



GIANT ATTRACTION
DAHLIA FLOWERED ZINNIA

POMPON ZINNIAS ARE AGAIN IN GREAT DEMAND. You surely will want to grow some of these. Colors: Canary Yellow, Salmon, Rose, Scarlet Gem, White Gem. See page 25 for prices.

YOU WILL ALSO WANT TO GROW

CALENDULA. Orange Shaggy.
MARIGOLD. Tagetes.
MARIGOLD. Guinea Gold.
MARIGOLD. Yellow Supreme.

MIGNONETTE. Reseda Odorata.
NASTURTIAM. Golden Gleam.
NASTURTIAM. Double Scarlet Gleam.
NASTURTIAM. Double Gleam Hybrids.

D. R. MAYO SEED CO. Inc.

119 Wall Avenue

Knoxville Tennessee